

# NELES

An aerial night photograph of a complex multi-level highway interchange. The roads are illuminated with warm yellow lights, and several cars are visible on the lanes. In the background, a suspension bridge with white towers and cables spans across a body of water. The city lights of a coastal city are visible in the distance under a dark blue twilight sky.

## Sustainability at Neles

A reliable partner offering sustainable  
solutions

January 10, 2022

RESTRICTED

# Integrating sustainability in everything we do

NELES



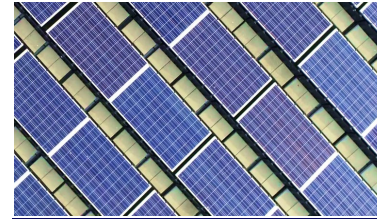
Klabin stabilizes its pulp mill production with Neles solution



SCA pulp and paper plant sets new standards



Neles valve expertise secures Naantali power plant's reliability



Emission-free and environmental-friendly production in Jiaxing, China



Recycling of wood waste in Vantaa, Finland

In 2020, we produced **2,086 t less CO<sub>2</sub>** than in 2019 (2,560 tCO<sub>2</sub>), equaling 7,134 roundtrip flights Helsinki, Finland to Munich, Germany

## Reliable partner offering sustainable solutions

### Health and safety

Safe working environment  
Safe products and services

### Environment

Environmental performance  
Sustainable customer processes  
Innovating for sustainability

### Society and people

Sustainability engagement  
Responsible procurement and 3<sup>rd</sup> party sustainability  
Responsible business conduct



Growing demand for materials



Safety, reliability, emissions



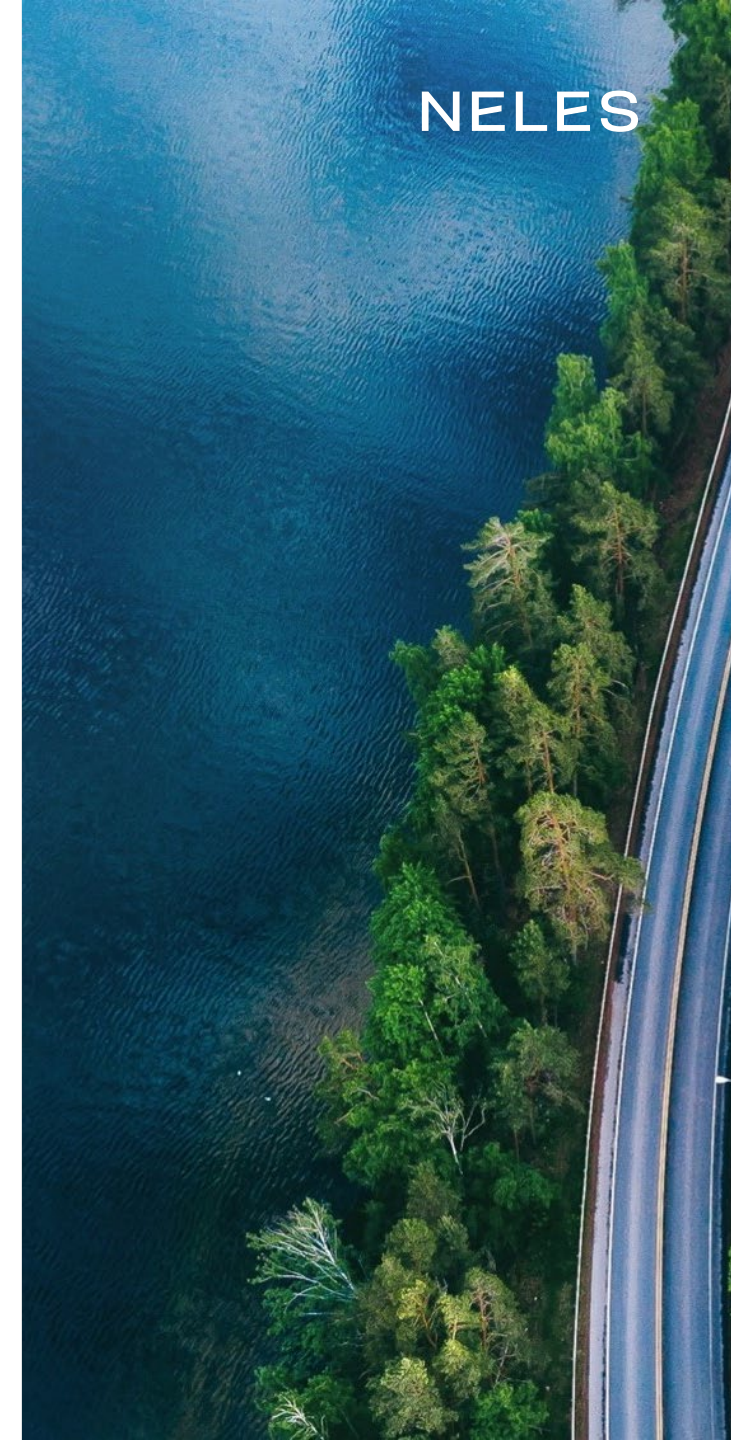
Growing automation levels and digitalization

Megatrends drive more focus on sustainable business operations

# Sustainability targets integrated in HSEQ management system

	Health and safety	Environment	Society and people
Long-term	<ul style="list-style-type: none"> <li>• Solid safety culture towards zero harm</li> <li>• Product safety always covered</li> </ul>	<ul style="list-style-type: none"> <li>• Zero harm for the environment</li> <li>• Reduce of waste and water</li> <li>• Increase opportunities within circular economy</li> <li>• Environmental efficiency in non-production sites</li> </ul>	<ul style="list-style-type: none"> <li>• Increase supplier sustainability audits annually 20% in higher risk areas</li> <li>• 20% of suppliers set emission targets by 2025</li> </ul>
2022	<ul style="list-style-type: none"> <li>• LTIF short-term target &lt; 1</li> <li>• TRIF &lt; 3</li> <li>• Sustainable materials in use</li> <li>• Regular HSE audits and corrective actions</li> <li>• Safety part of everyday work life                             <ul style="list-style-type: none"> <li>• Risk observations (PDD)</li> <li>• Safety conversations (PDD)</li> <li>• Safety training incl. eLearning</li> </ul> </li> </ul>	<ul style="list-style-type: none"> <li>• Targets to reduce waste, water, energy for each factory</li> <li>• Logistics: -20% CO2 by 2025</li> <li>• Production: -25% CO2 by 2030</li> <li>• Sustainability targets for R&amp;D</li> </ul>	<ul style="list-style-type: none"> <li>• 90% of Supplier Code of Conduct signed in terms of spend by 2023</li> <li>• 24 supplier sustainability audits in higher risk areas</li> <li>• 10% of suppliers set emission targets by 2023</li> <li>• Neles Code of Conduct training with Human Rights in focus</li> </ul>

Neles' sustainability targets are updated based on the most material sustainability themes defined in the materiality assessment in 2021.



# Reinventing reliability

neles.com



@neles



@nelesworld



@nelesflow



@Neles



@nelesflow

NELES