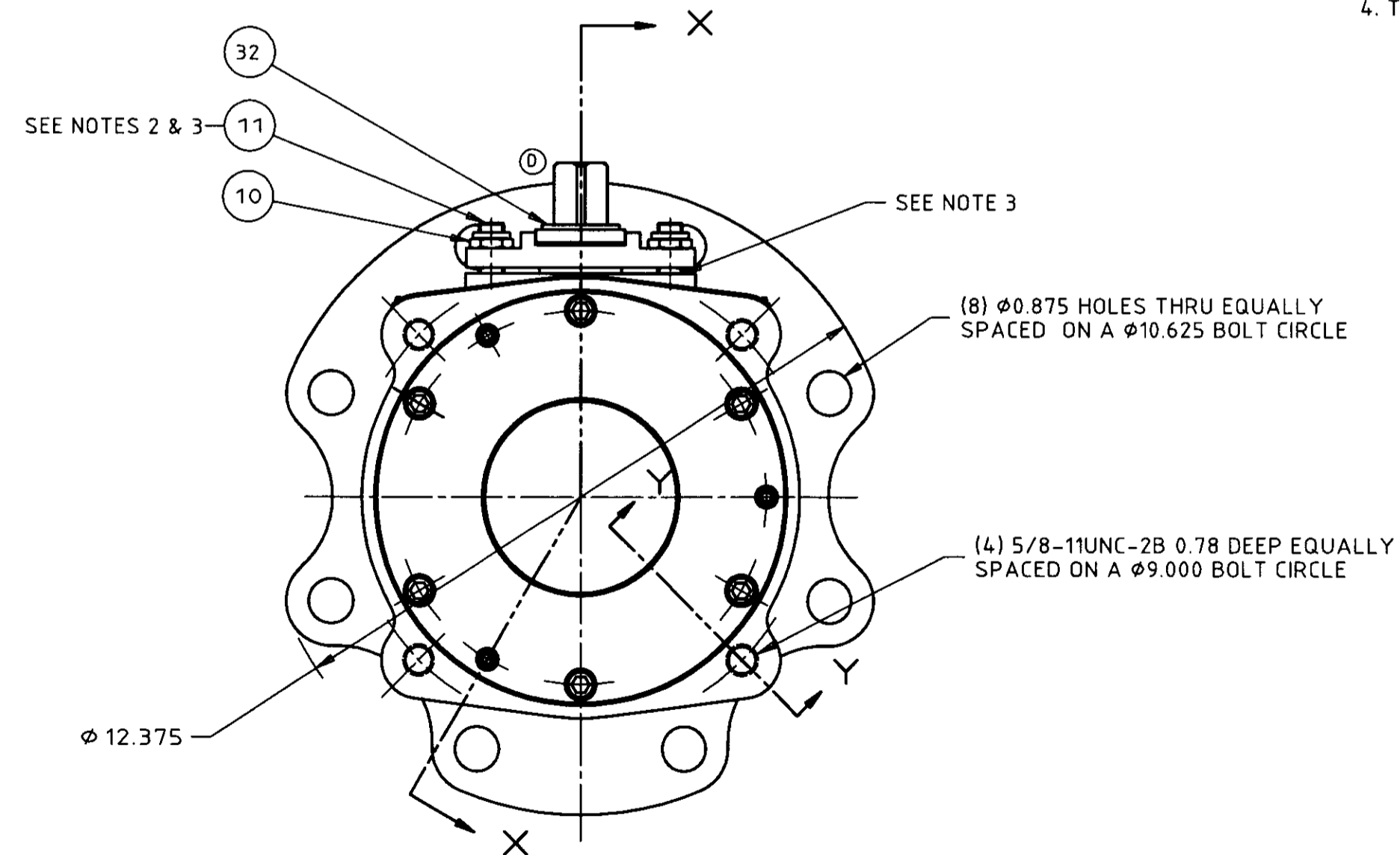
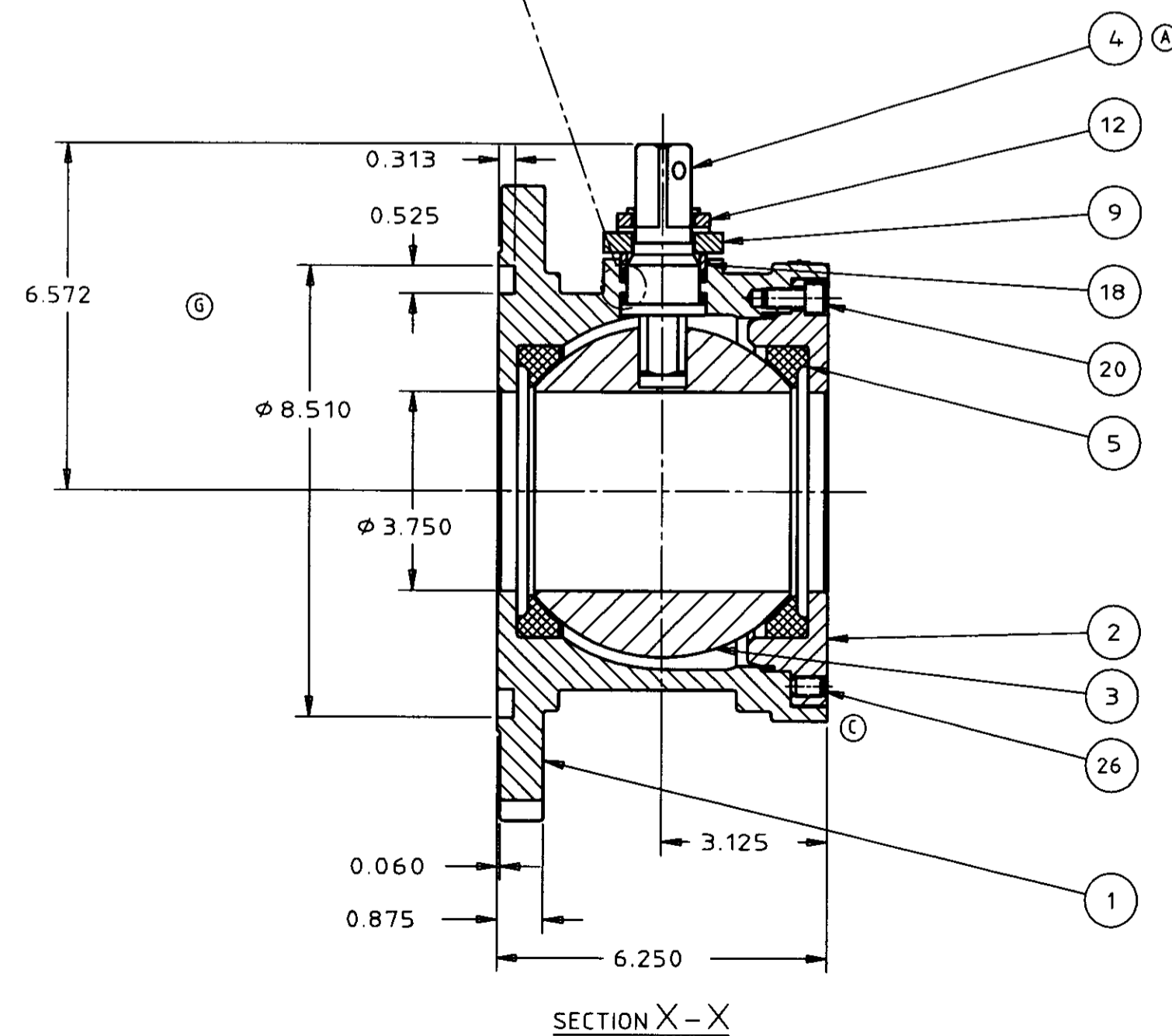
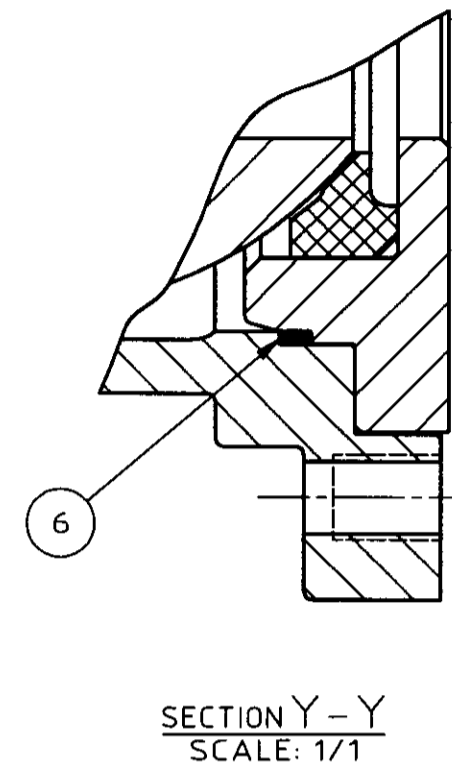
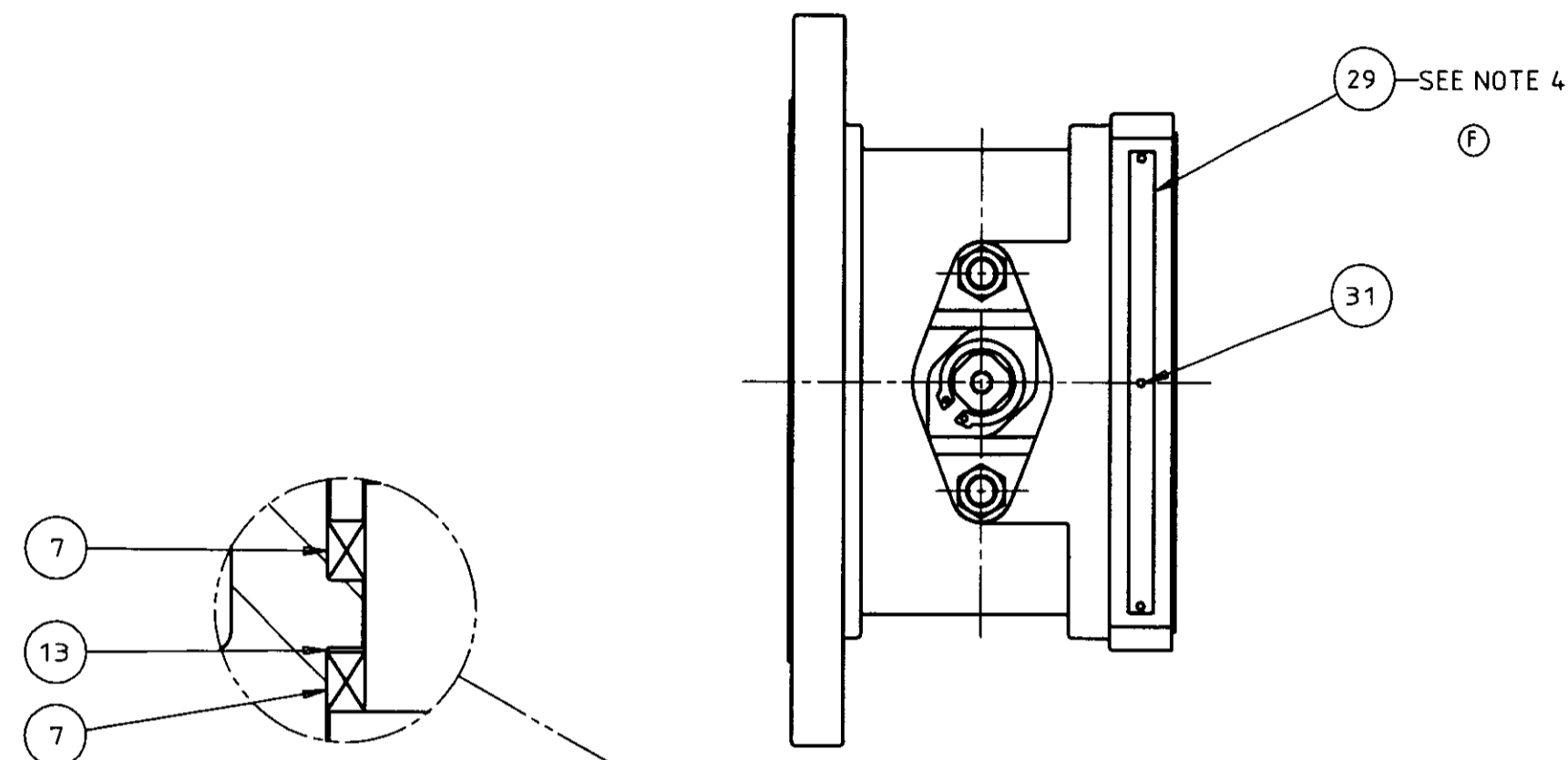


LET	ECN	REVISION	DRAWN	APPROV.	DATE
--	16246	WAS P-12786	PJD	RET	9/4/96
A	16781	CHANGED STEM FROM TOP ENTRY DESIGN TO BOTTOM ENTRY	PJD	RET	9/17/97
B	16846	DELETED ITEM 21, INDICATOR STOP SET SCREW	PJD	RET	10/30/97
C	16869	DELETED ITEM 25, HEX. JAM NUT	PJD	RET	1/9/98
D	17012	CHANGED BODY TO AGREE WITH CASTING DRAWING	PJD	RET	3/11/98
E	17206	ITEM 13 SECONDARY STEM SEAL QTY. 1 WAS 2	B A	PJD	9 / 1 / 98
F	17261	MOVED I.D. TAG	B A	KPG	11 / 6 / 98
G	17404	REMOVED 5.873 DIM.	B A	PJD	12 MAR 99
H	17423	REMOVED RELIEFS SEE ECN FOR DETAILS	B A	SAL	4 AUG 99
J	17818	CHANGED SEALS & INSERTS SEE ECN FOR DETAILS	B A	PJD	14 NOV 00
K	18810	CHANGED I.D. TAG SEE ECN FOR DETAILS	B A	DRE	24 JUN 04

ITEM NO.	PART NAME	QTY.
1	BODY	1
2	INSERT	1
3	BALL	1
4	STEM	1
5	SEAT	2
6	BODY SEAL	1
7	STEM SEAL	2
9	BONNET PLATE	1
10	HEX NUT	2
11	BONNET STUD	2
12	INDICATOR STOP	1
13	SECONDARY STEM SEAL	1
18	COMPRESSION RING	1
20	SOC. HD. CAP SCREW	6
26	SET SCREW	3
29	IDENTIFICATION TAG	1
31	POP RIVET	2
32	RETAINING RING	1

NOTES:

- FOR INSTALLATION, MAINTENANCE AND OPERATING INSTRUCTIONS SEE IMO-R14.
- WHERE IDENTIFICATION APPEARS ON STUD END ASSEMBLY WITH IDENTIFICATION ALWAYS VISIBLE.
- WELD STUDS IN PLACE PER DWG. I-1376.
- TAG ATTACHMENT PER JMA-98.



THIS DRAWING AND ALL INFORMATION CONTAINED HEREIN ARE THE PROPERTY OF JAMESBURY, INC. AND ARE NOT TO BE USED EXCEPT AS AUTHORIZED BY JAMESBURY, INC.

UNLESS OTHERWISE NOTED DIMENSIONING, TOLERANCING, & DRAWING INTERPRETATION IS IN ACCORDANCE WITH ASME Y14.5M

ANGLES = 45° FINISH = $\sqrt{16}$

REMOVE SHARP EDGES AND CORNERS TO R2 - R3 RADIUS OR CHAMFER, DIMENSIONS IN INCHES.

MATERIAL CODE	MATERIAL TYPE	MATERIAL SPECIFICATIONS	IDENT. MARK
	MAKE FROM PART NO.	DO NOT SCALE DRAWING	SCALE 1:2
	TITLE:	DRAWN PJD	DATE 9/4/96
	ASSEMBLY 4" 5RET3 STANDARD PORT BOTTOM UNLOADING RAILROAD VALVE	APPROV. RET	DATE 9/5/96
JAMESBURY <small>A NELES AUTOMATION COMPANY WORCESTER MA., U.S.A.</small>		SIZE D	DWG NO 5264
			REV K