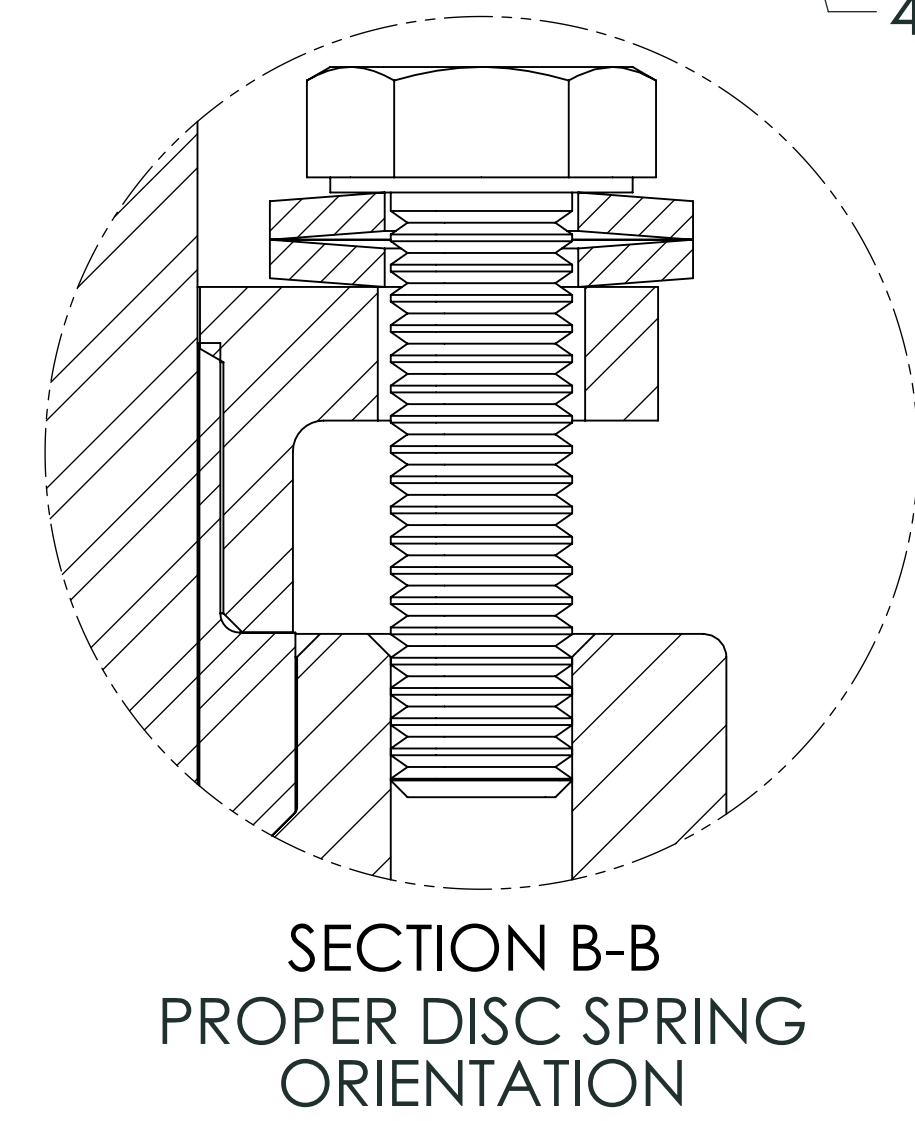
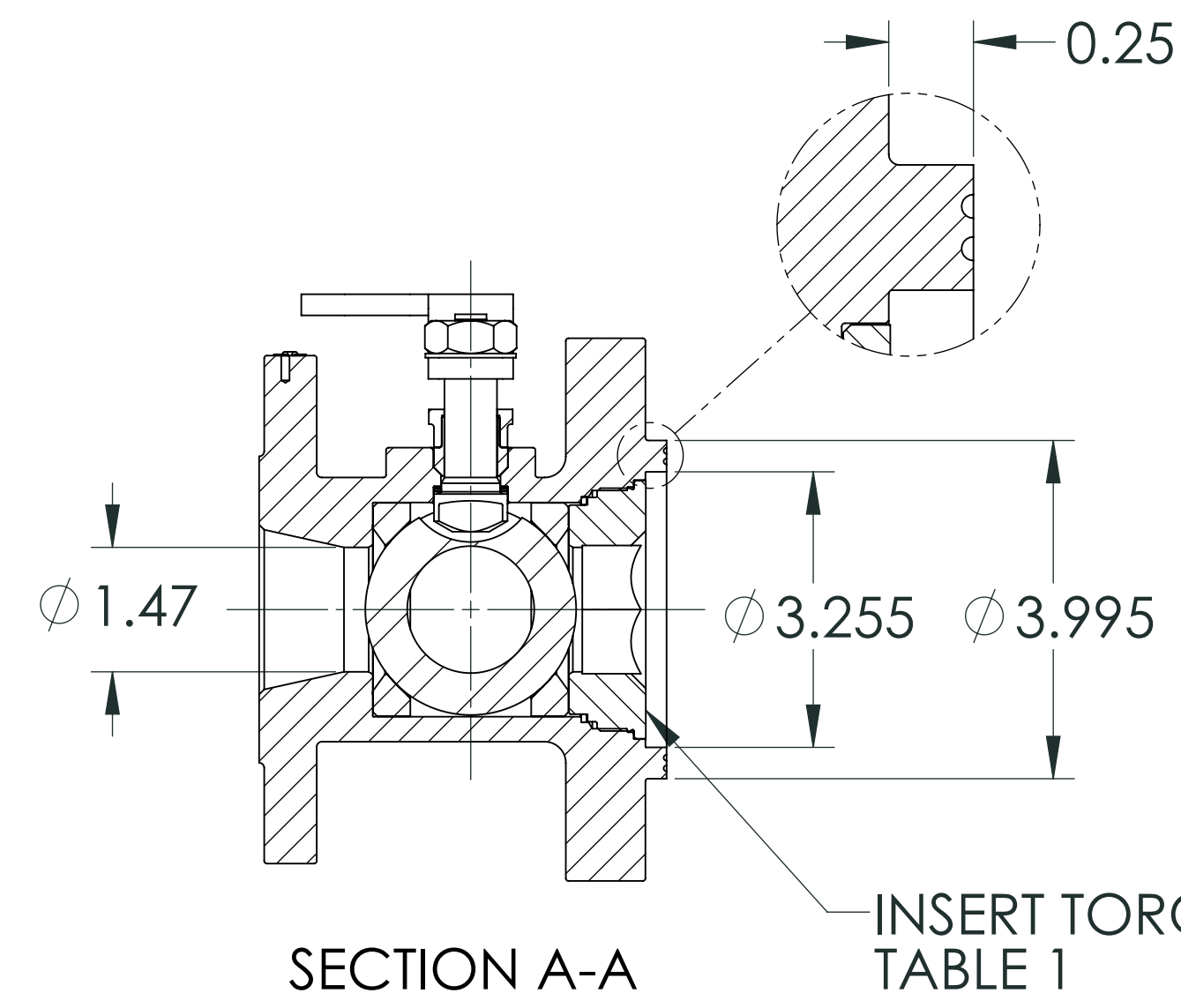
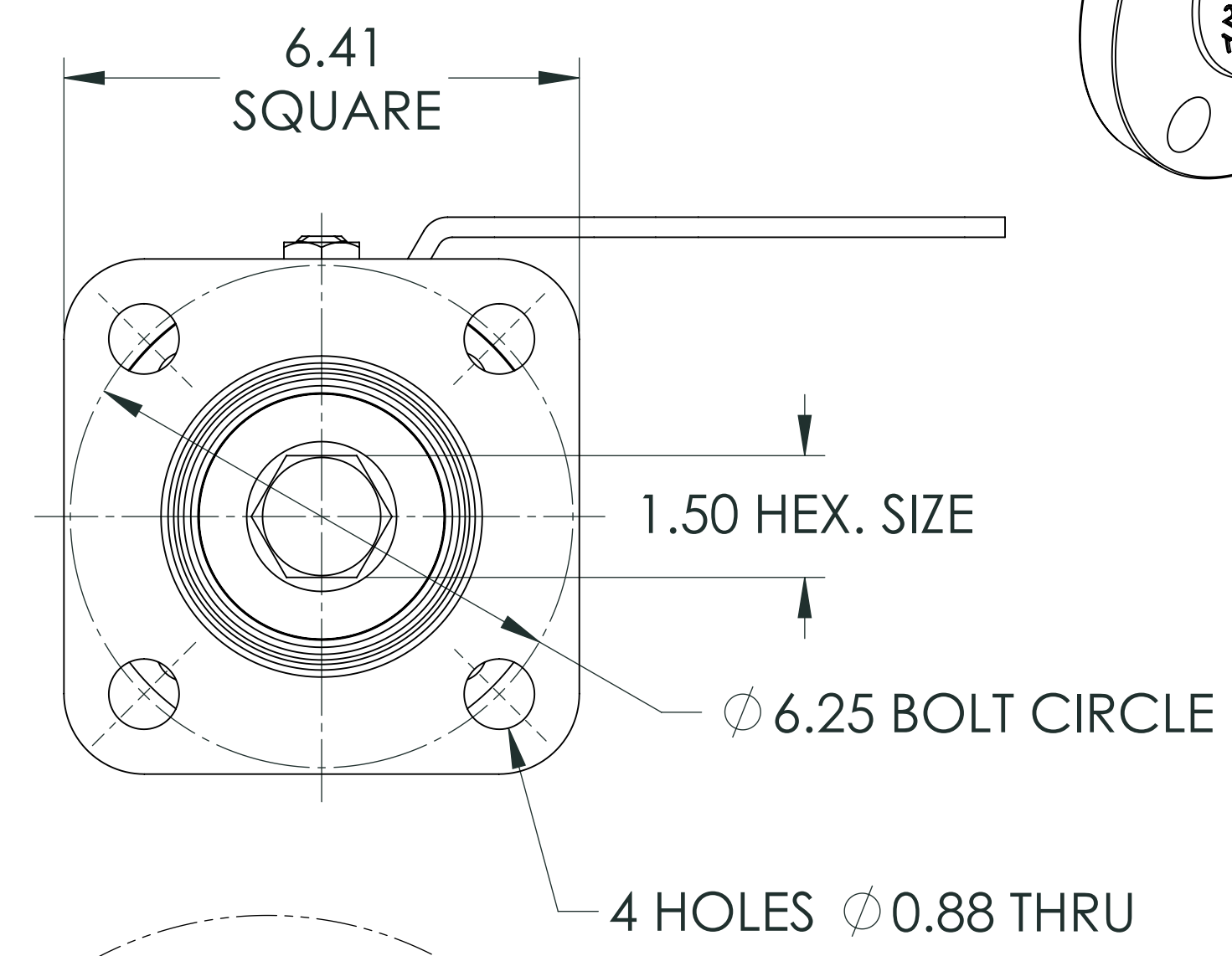
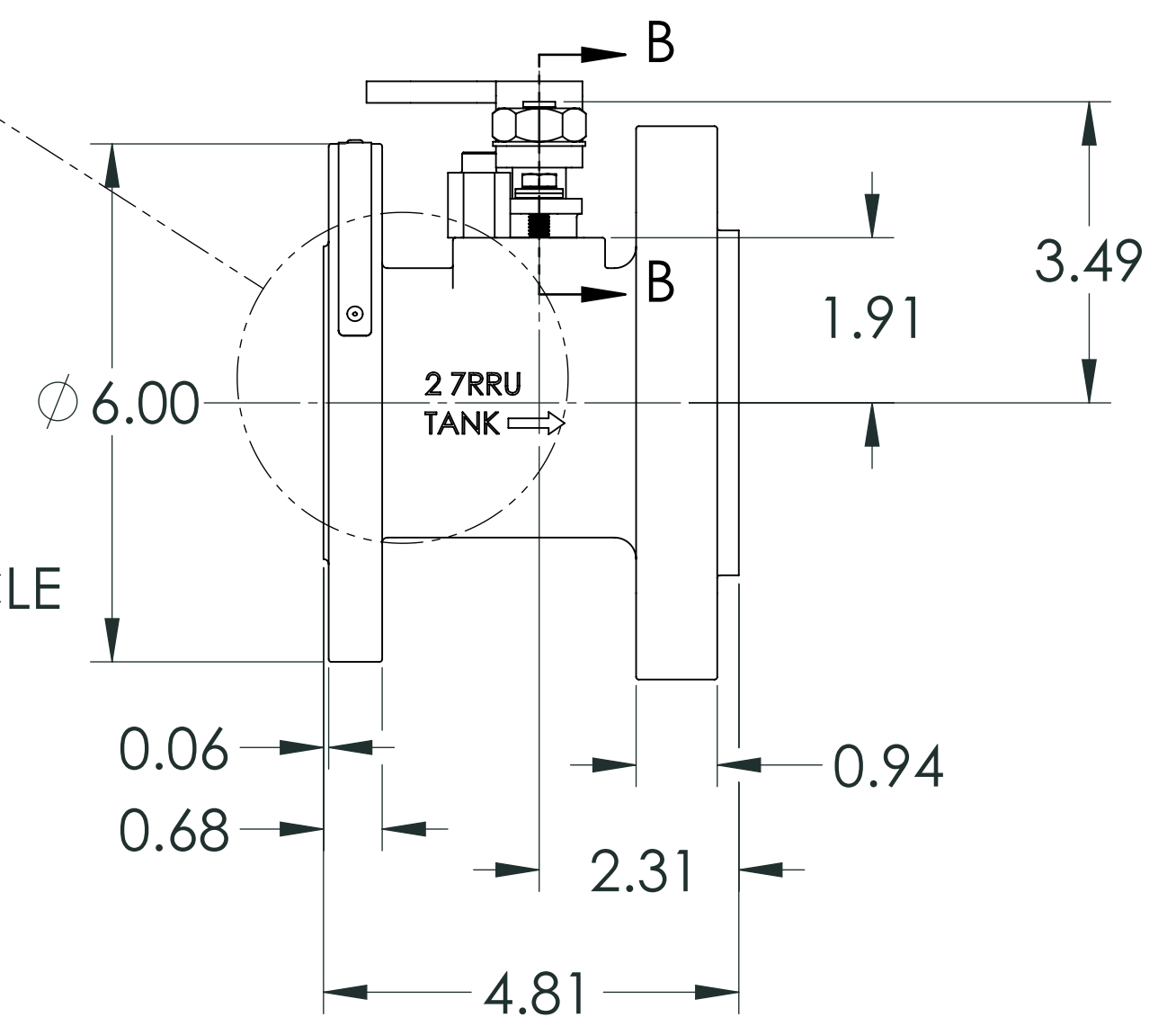
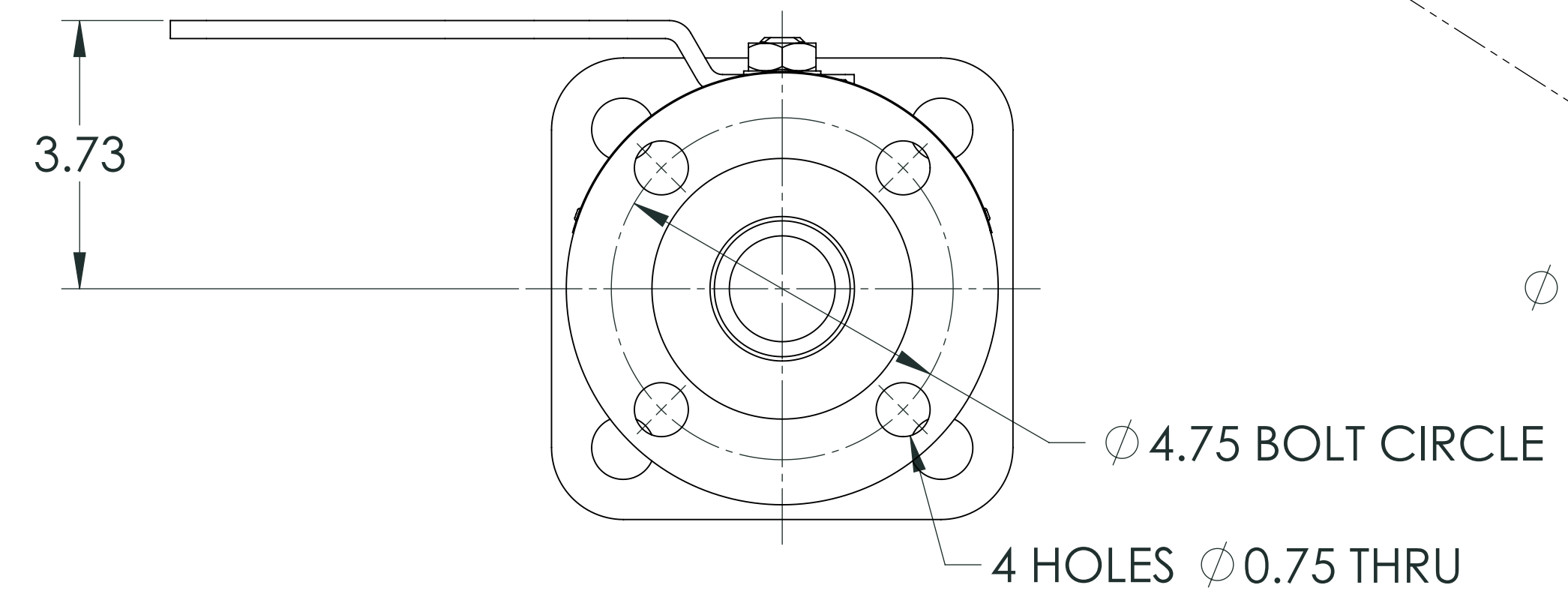
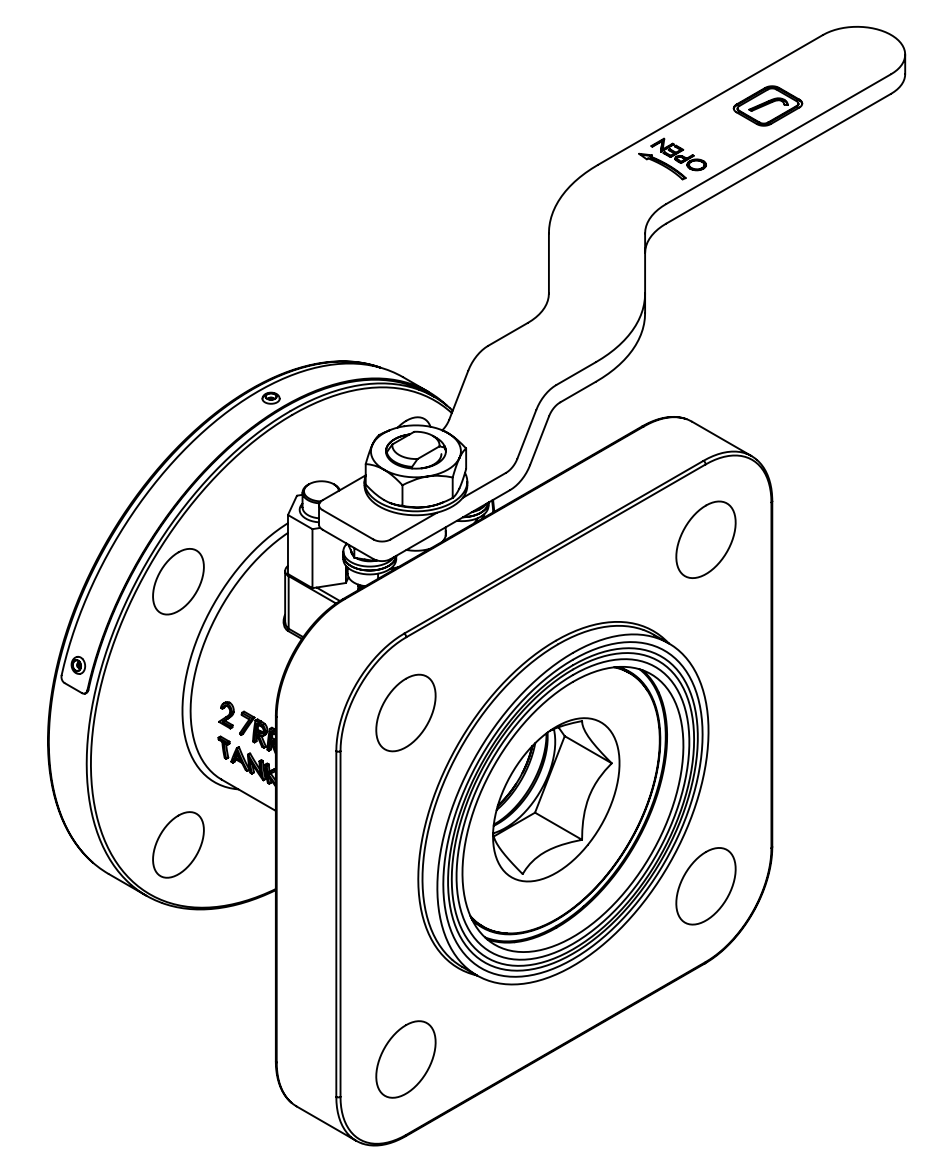
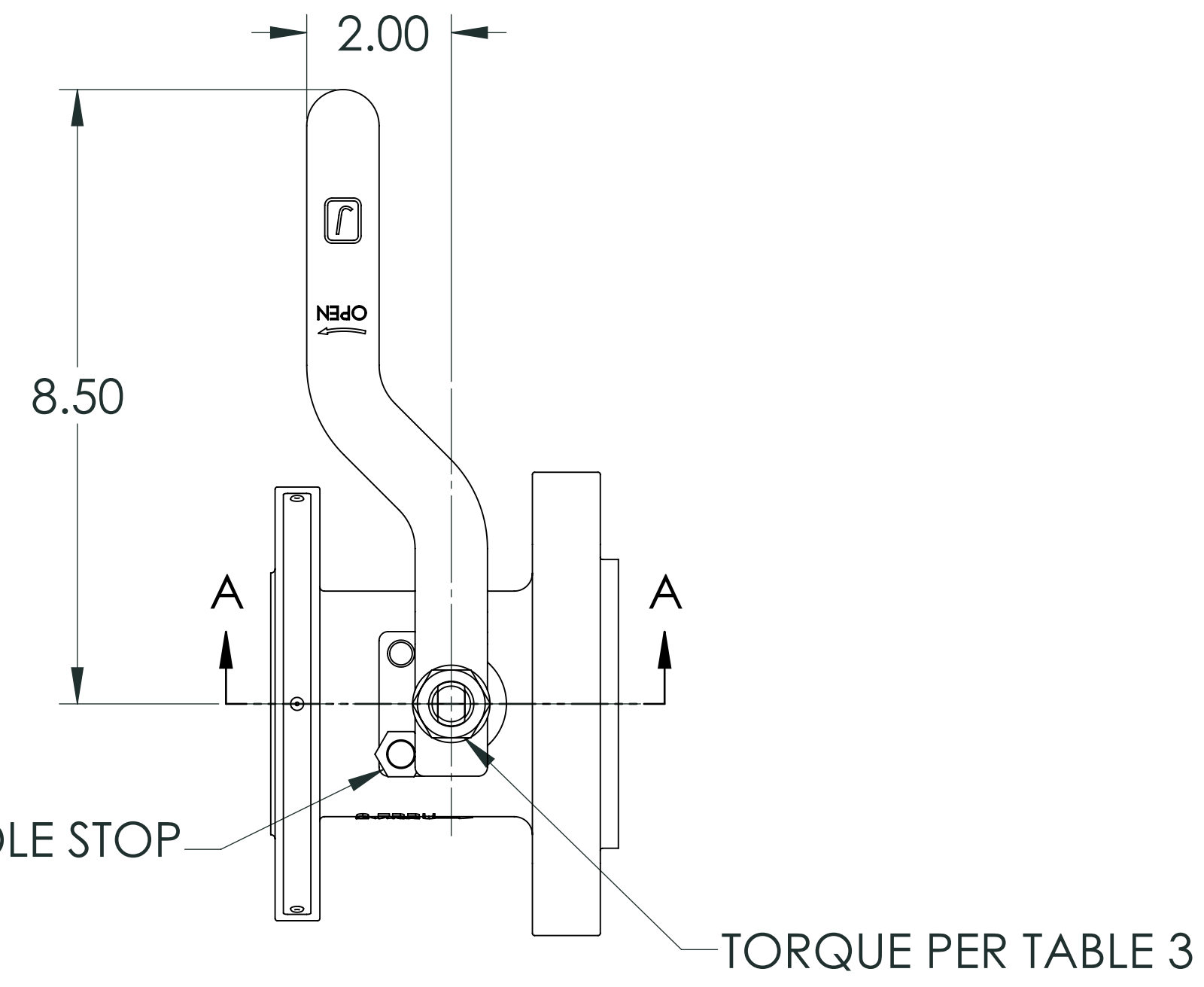
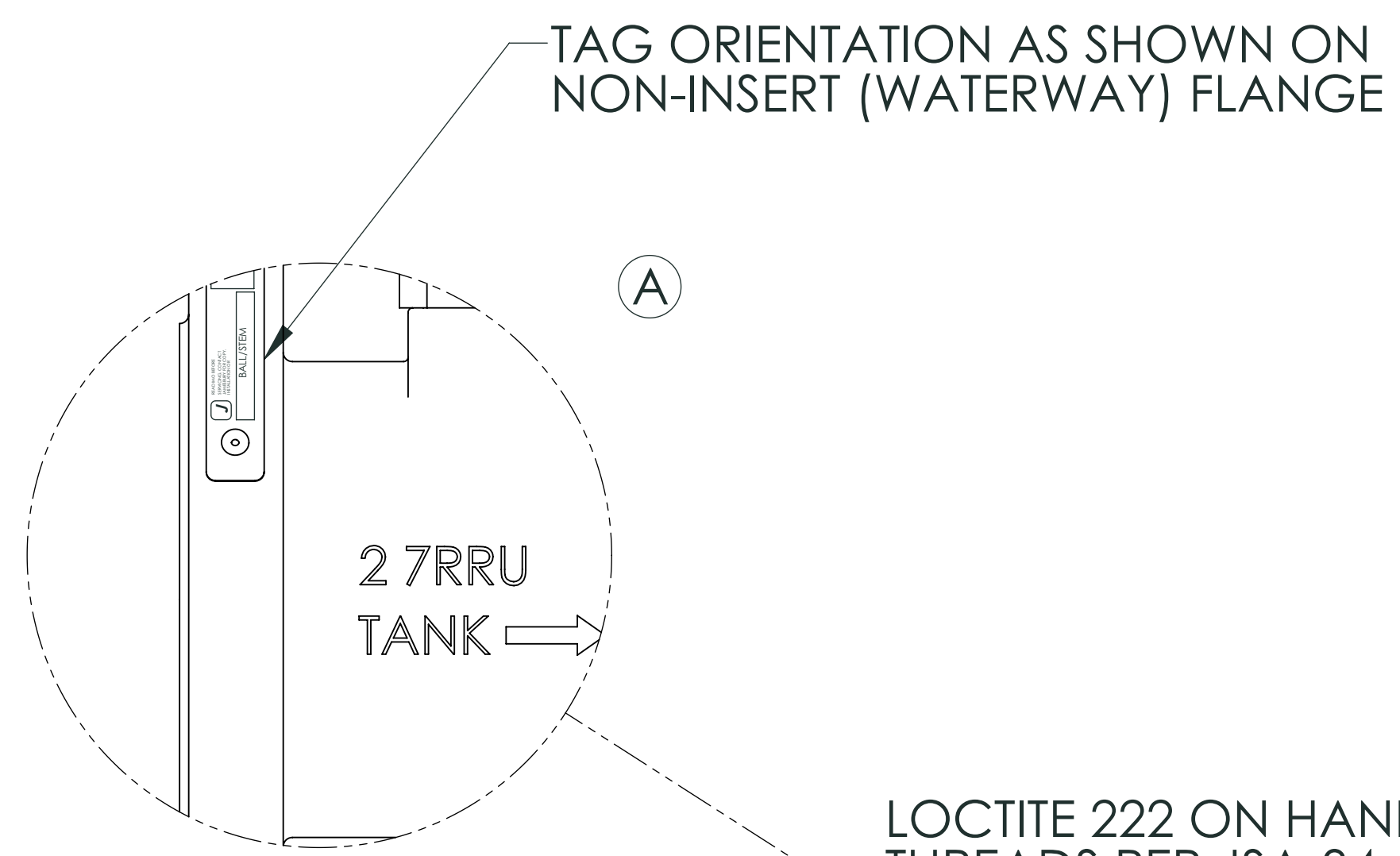


LET	ECN	REVISION	DRAWN	APPROVED	DATE
A	20502	ADDED DETAIL VIEW FOR TAG	PJD	KAS	7/22/10



- NOTES:**
1. TAG ATTACHMENT PER JMA-98
 2. FOR INSTALLATION, MAINTENANCE AND OPERATING INSTRUCTIONS SEE IMO-R21.

THIS DRAWING AND ALL INFORMATION CONTAINED HEREIN ARE THE PROPERTY OF METSO AUTOMATION USA, INC. AND ARE NOT TO BE USED EXCEPT AS AUTHORIZED BY METSO AUTOMATION USA, INC.		SPECIFICATIONS TO BE USED IN CONJUNCTION WITH THIS DRAWING		DO NOT SCALE DRAWING		SCALE 1:2	
UNLESS OTHERWISE NOTED DIMENSIONING, TOLERANCING, & DRAWING INTERPRETATION IS IN ACCORDANCE WITH ASME Y14.5M		JSA-01 JSA-10 JSA-17 JSA-34 JST-02		TITLE: ASSEMBLY 2" 7RRU TOP LOADING STANDARD PORT BALL VALVE		DRAWN PJD 5/20/08 DATE APPVD. DATE DRE 5/27/08	
ANGLES = +5° FINISH 290 REMOVE SHARP EDGES AND CORNERS TO .02 - .03 RADIUS OR CHAMFER, DIMENSIONS IN INCHES.		SIZE D		DWG NO. 5483		REV A	
METSO AUTOMATION USA, INC. SHREWSBURY, MASSACHUSETTS				SHEET 1 OF 2			

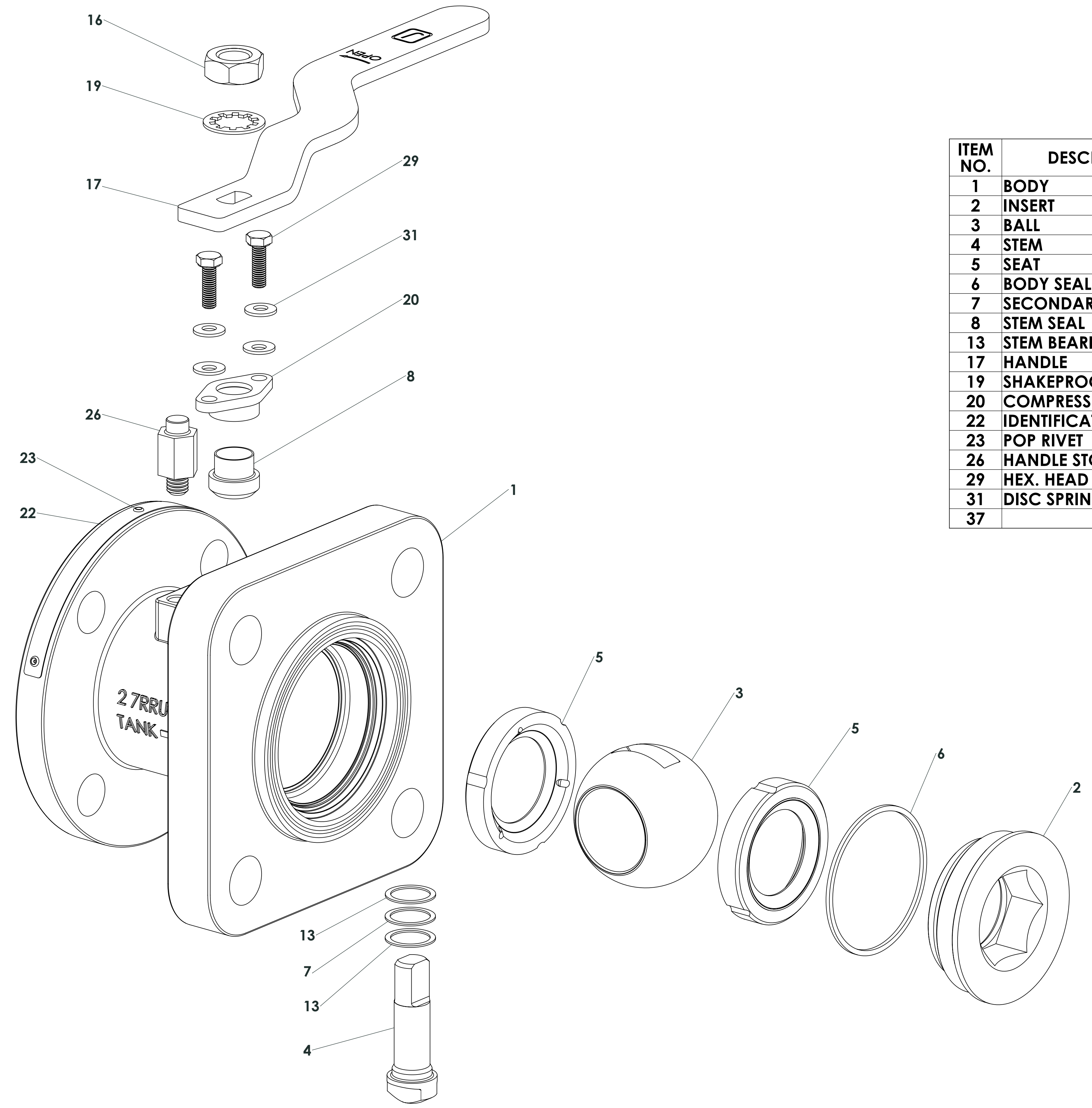
LET	ECN	REVISION	DRAWN	APPROVED	DATE
A	20502	See Sheet1	-	-	-

ITEM NO.	DESCRIPTION	QTY.
1	BODY	1
2	INSERT	1
3	BALL	1
4	STEM	1
5	SEAT	2
6	BODY SEAL	1
7	SECONDARY STEM SEAL	1
8	STEM SEAL	1
13	STEM BEARING	2
17	HANDLE	1
19	SHAKEPROOF WASHER	1
20	COMPRESSION PLATE	1
22	IDENTIFICATION TAG	1
23	POP RIVET	3
26	HANDLE STOP	1
29	HEX. HEAD CAP SCREW	2
31	DISC SPRING	4
37		1

TABLE 1	
INSERT TORQUE	
VALVE SIZE	TORQUE LB.-FT. (±10%)
2"	350

TABLE 2	
HEX. HEAD CAP SCREW TORQUE	
VALVE SIZE	TORQUE LB.-IN.
2"	32

TABLE 3	
HANDLE NUT TORQUE	
VALVE SIZE	TORQUE LB.-FT.
2"	30 - 35



THIS DRAWING AND ALL INFORMATION CONTAINED HEREIN ARE THE PROPERTY OF METSO AUTOMATION USA, INC. AND ARE NOT TO BE USED EXCEPT AS AUTHORIZED BY METSO AUTOMATION USA, INC. UNLESS OTHERWISE NOTED DIMENSIONING, TOLERANCING, & DRAWING INTERPRETATION IS IN ACCORDANCE WITH ASME Y14.5M ANGLES = +5° FINISH ∇ REMOVE SHARP EDGES AND CORNERS TO .02 - .03 RADIUS OR CHAMFER, DIMENSIONS IN INCHES.	MATERIAL CODE JSA-01 JSA-10 JSA-17 JSA-34 JST-02	MATERIAL TYPE MAKE FROM PART NO.	MATERIAL SPECIFICATIONS DO NOT SCALE DRAWING	IDENT. MARK SCALE 1:1
	TITLE: ASSEMBLY 2" 7RRU TOP LOADING STANDARD PORT BALL VALVE	DRAWN PJD DATE 5/20/08	APPVD. DRE DATE 5/27/08	SIZE DWG NO. D 5483

METSO AUTOMATION USA, INC.
 SHREWSBURY, MASSACHUSETTS

SHEET 2 OF 2