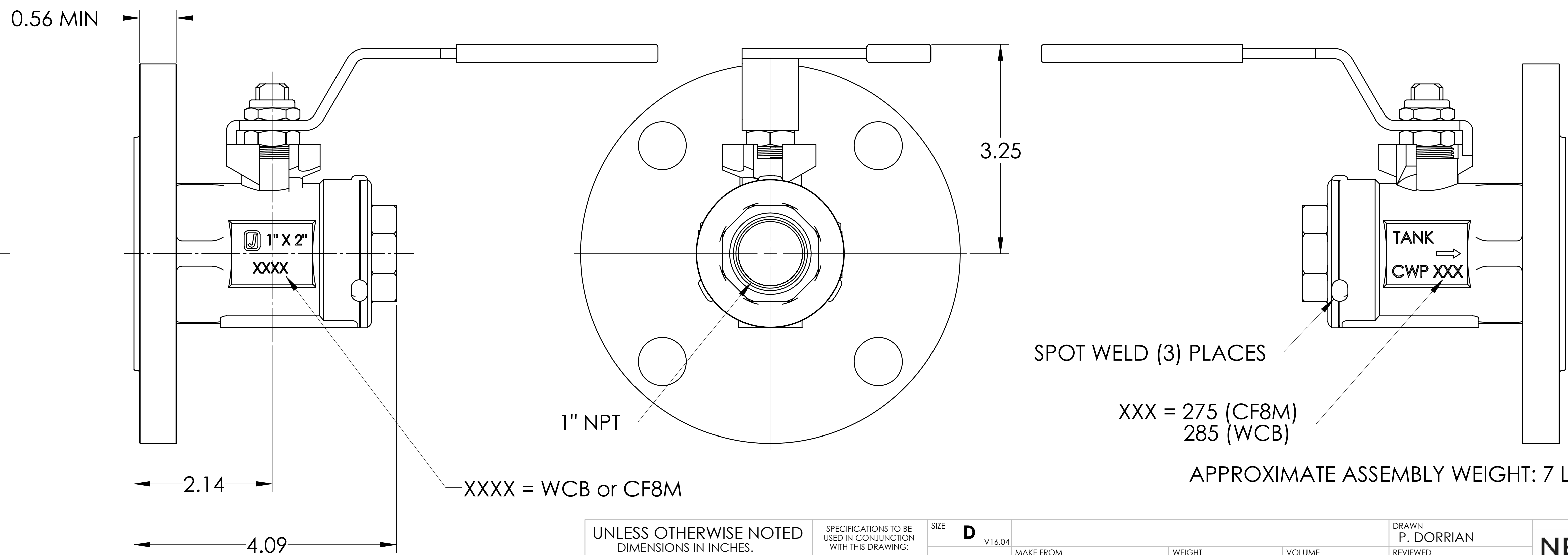
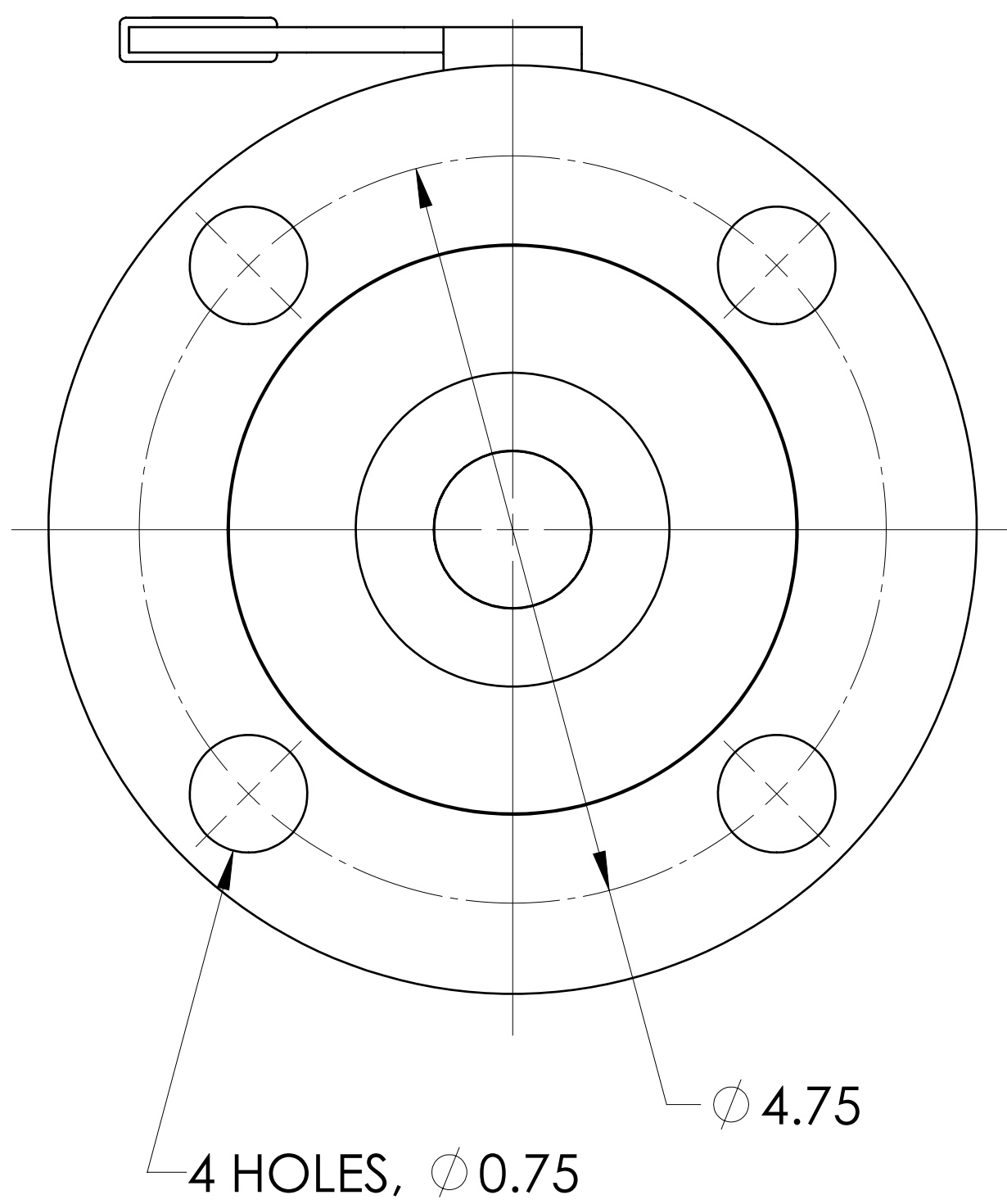
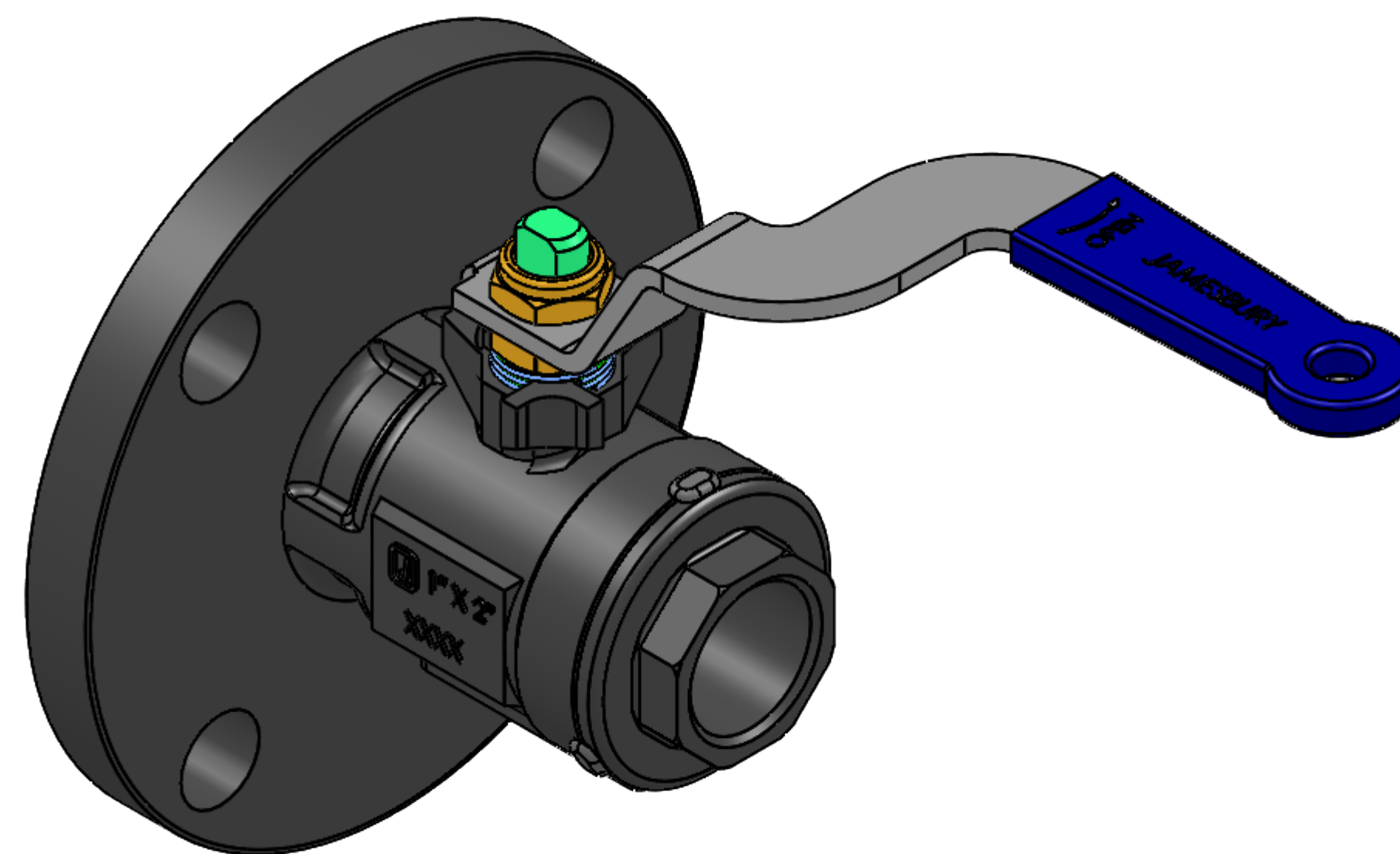
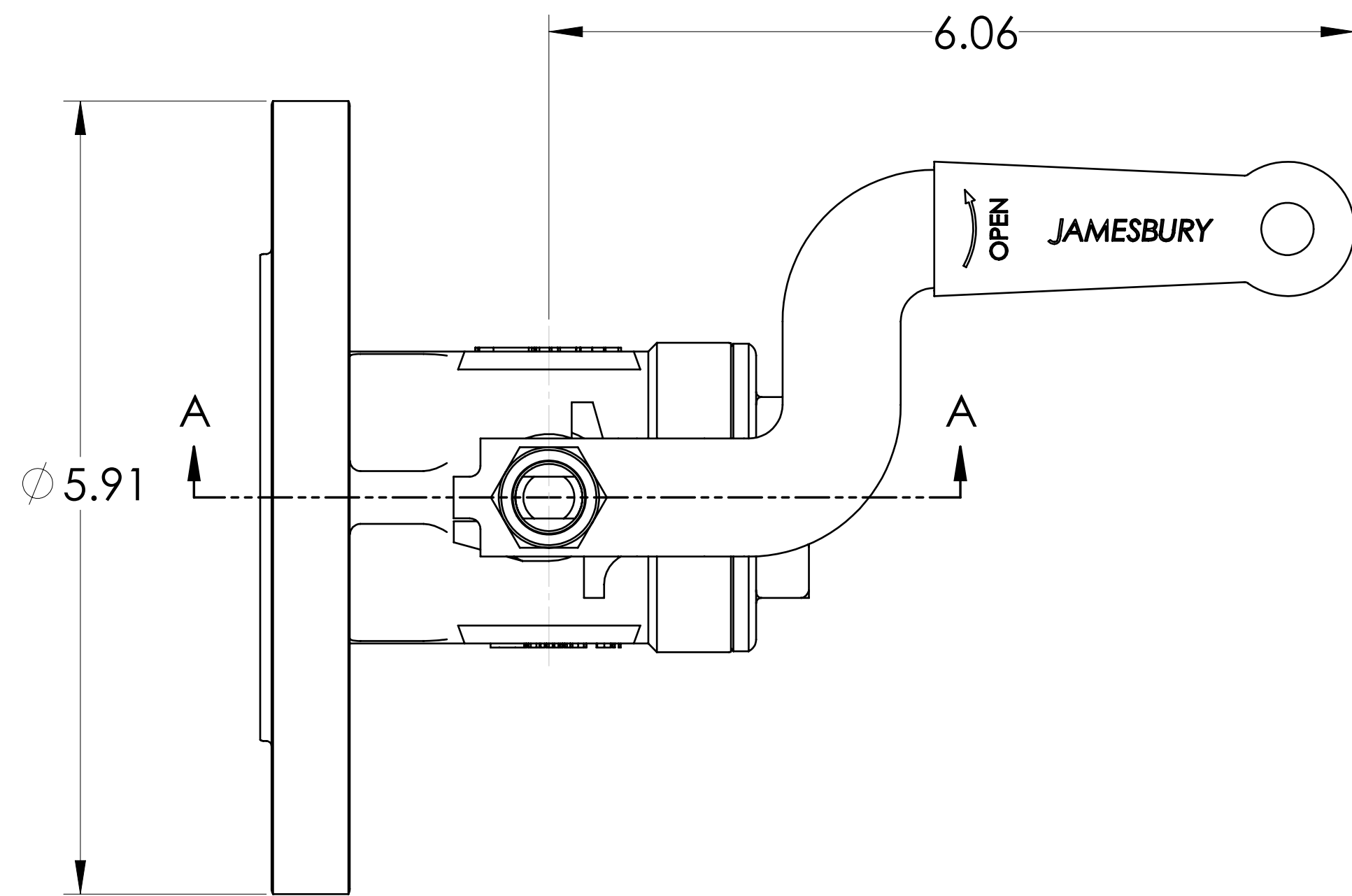
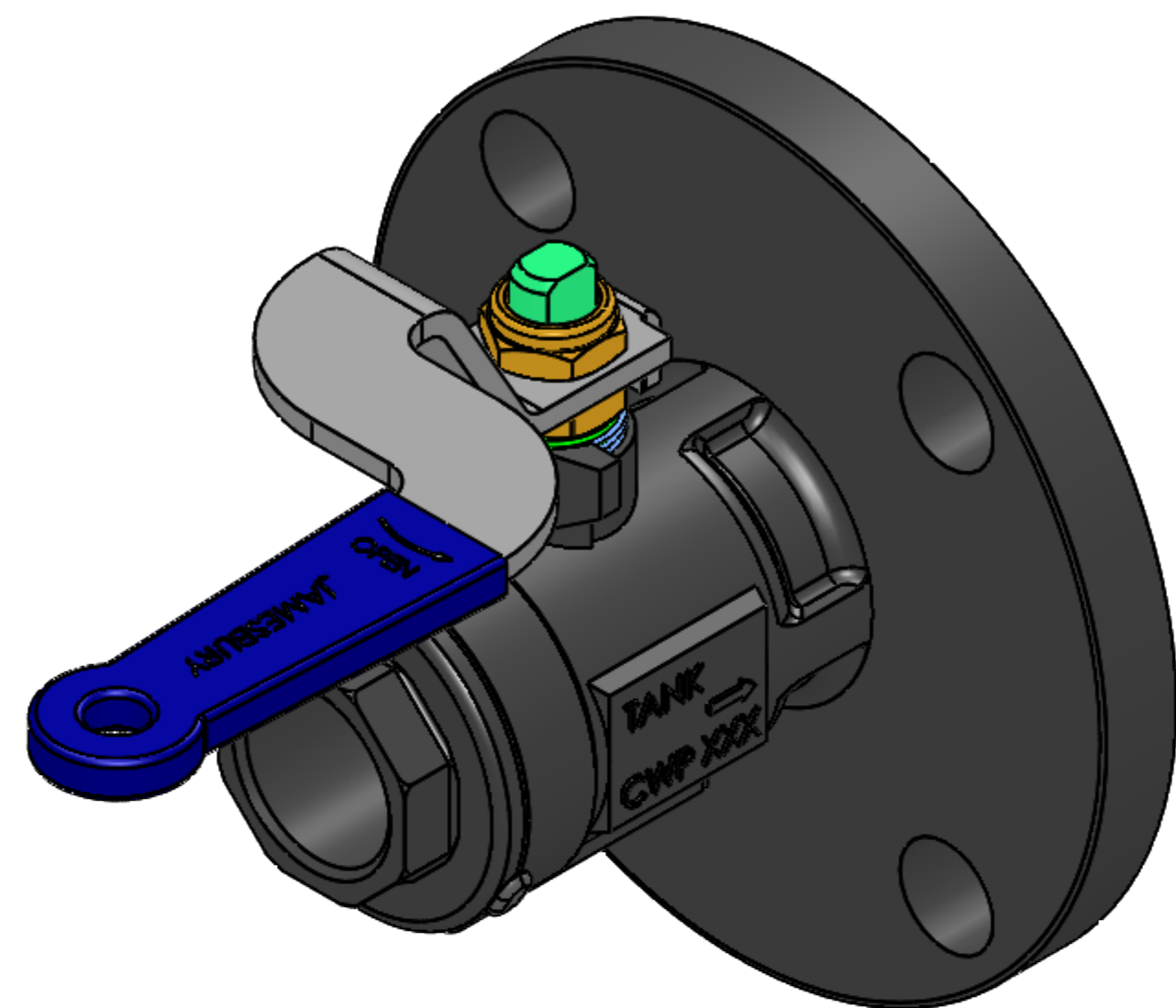


WE NELES ARE THE OWNERS OF THIS DOCUMENT AND ALL INFORMATION CONTAINED HEREIN WHICH MUST NOT, WITHOUT OUR WRITTEN PERMISSION, BE COPIED, GIVEN TO A THIRD PARTY OR IN ANY OTHER WAY USED AGAINST OUR COPYRIGHT. © 2020 NELES



SPOT WELD (3) PLACES

XXX = 275 (CF8M)
285 (WCB)

APPROXIMATE ASSEMBLY WEIGHT: 7 LBS.

(B)

UNLESS OTHERWISE NOTED
DIMENSIONS IN INCHES.
DIMENSIONING, TOLERANCING, AND DRAWING
INTERPRETATION IS IN ACCORDANCE WITH
ASME Y14.5M 250

SPECIFICATIONS TO BE
USED IN CONJUNCTION
WITH THIS DRAWING:

SIZE
D
V16.04

ASSEMBLY
1" X 2" 6FRF
RAILROAD VALVE

SOLIDWORKS

LOCATION
SHREWSBURY - USA

DRAWN
P. DORRIAN

REVIEWED

NELES

APPROVED
K.SUNDBERG

DRAWING NO.
5541

DATE
3/19/2013

REV.
B

UNRESTRICTED

SHEET
1 OF 2

ECN NO.
46080

REVISION DESCRIPTION
SEE ECN FOR CHANGES

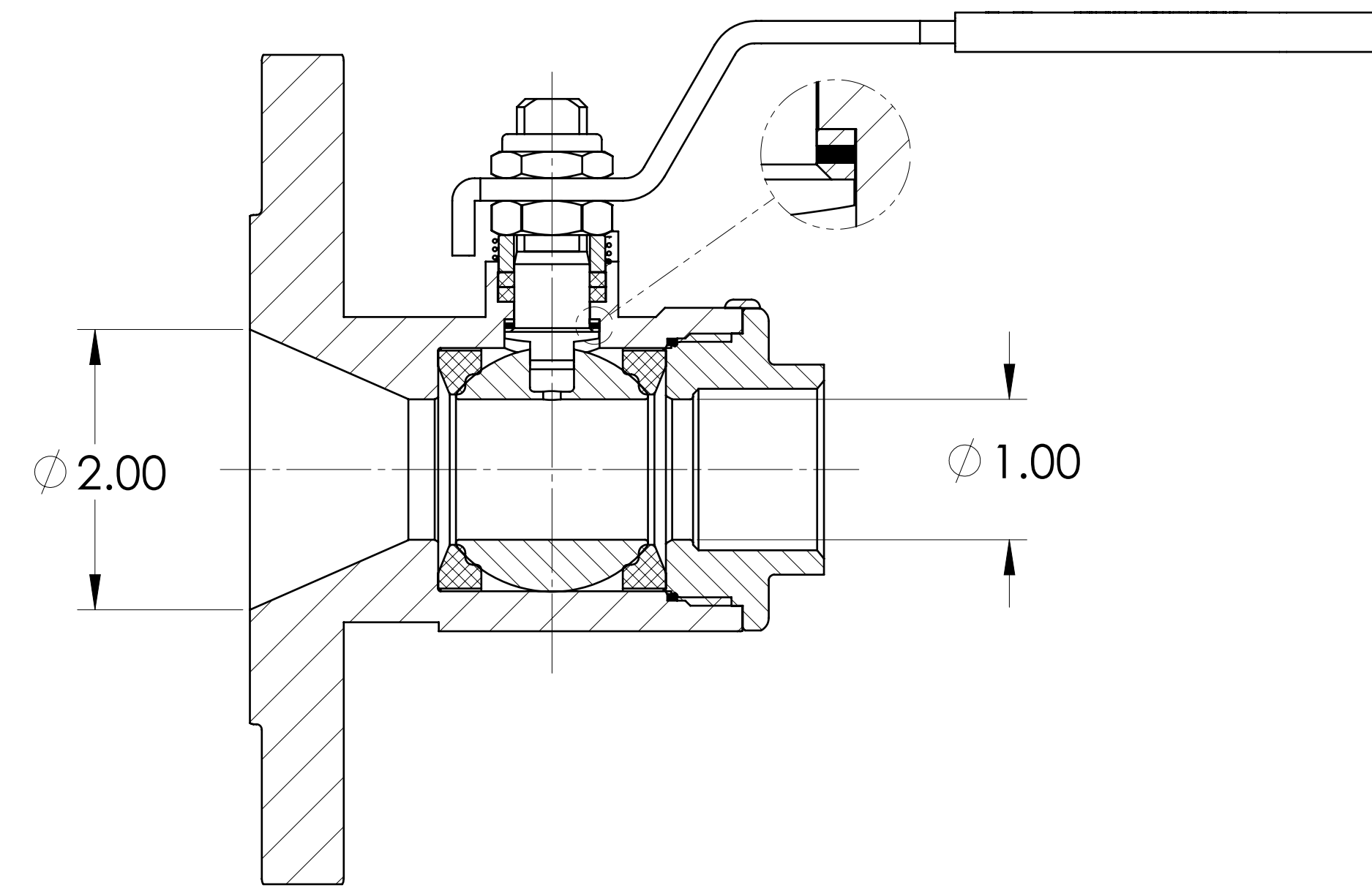
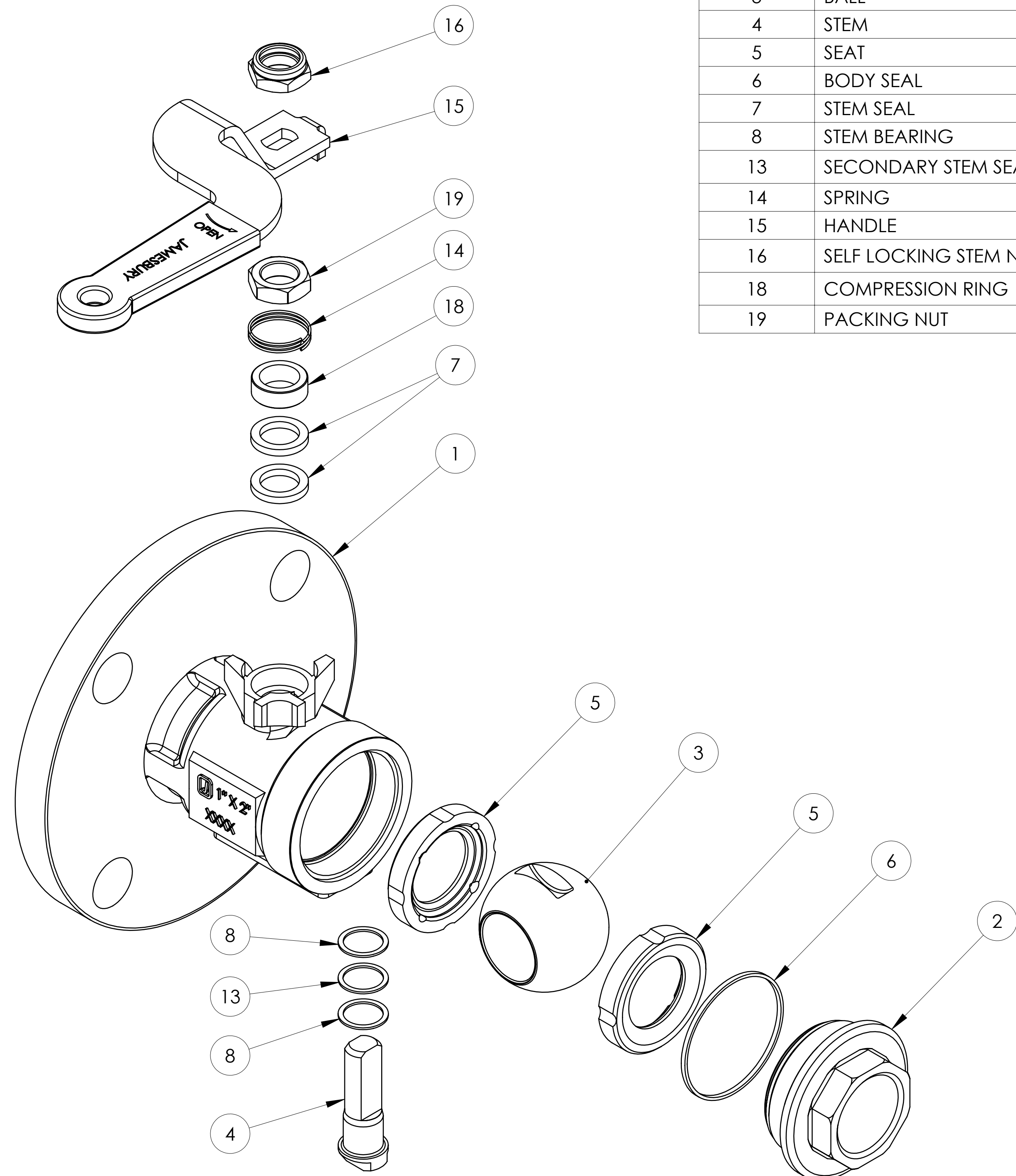
DRAWN
C. DESROSIERS

APPROVED
M. HOPE-SOWAH

REVIEWED

DATE
04 JAN 2021

ITEM NO.	PART NAME	QTY
1	BODY	1
2	BODY CAP	1
3	BALL	1
4	STEM	1
5	SEAT	2
6	BODY SEAL	1
7	STEM SEAL	2
8	STEM BEARING	2
13	SECONDARY STEM SEAL	1
14	SPRING	1
15	HANDLE	1
16	SELF LOCKING STEM NUT	1
18	COMPRESSION RING	1
19	PACKING NUT	1



SECTION A-A

ECN NO. 46080	REVISION DESCRIPTION SEE ECN FOR CHANGES
------------------	---

UNLESS OTHERWISE NOTED DIMENSIONS IN INCHES. DIMENSIONING, TOLERANCING, AND DRAWING INTERPRETATION IS IN ACCORDANCE WITH ASME Y14.5M	
ANGLES = ±5°	FINISH = 250
REMOVE SHARP EDGES AND CORNERS TO 0.02-0.03 RADIUS OR CHAMFER	
DRAWN C. DESROSIERS	REVIEWED
APPROVED M. HOPE-SOWAH	DATE 04 JAN 2021

SPECIFICATIONS TO BE USED IN CONJUNCTION WITH THIS DRAWING:		SIZE D V16.04	MAKE FROM	WEIGHT	VOLUME cm ³	DRAWN P. DORRIAN	NELES
ASSEMBLY 1" X 2" 6FRF RAILROAD VALVE						APPROVED K.SUNDBERG	
SOLIDWORKS						DRAWING NO. 5541	REV. B
LOCATION SHREWSBURY - USA						UNRESTRICTED	SHEET 2 OF 2