

CAST MARKINGS ON OPPOSITE SIDE OF BODY

XXX = 275 (CF8M)
285 (WCB)

APPROXIMATE ASSEMBLY WEIGHT: 35 LBS.

(A)

UNLESS OTHERWISE NOTED
DIMENSIONS IN INCHES.
DIMENSIONING, TOLERANCING, AND DRAWING
INTERPRETATION IS IN ACCORDANCE WITH
ASME Y14.5M 250

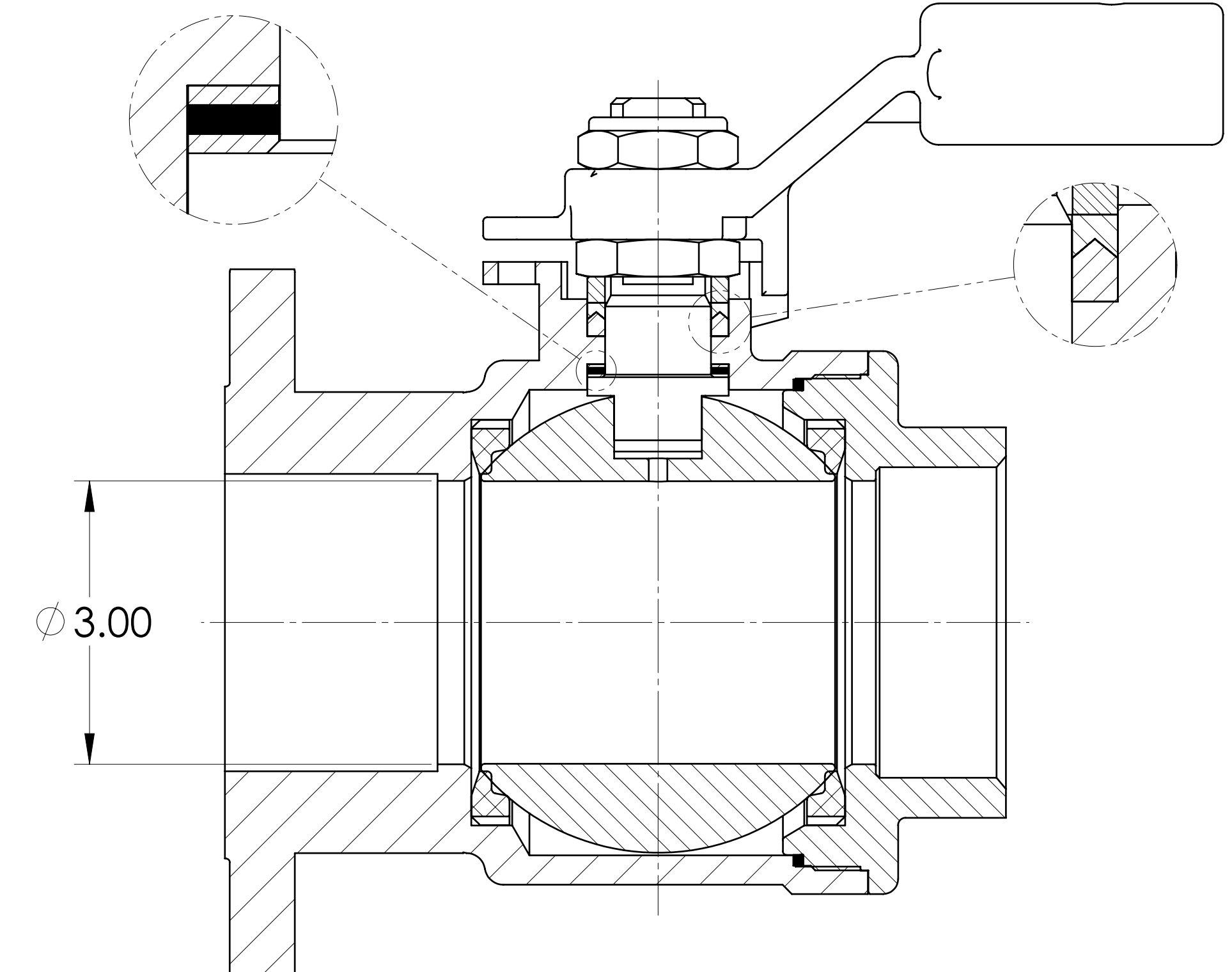
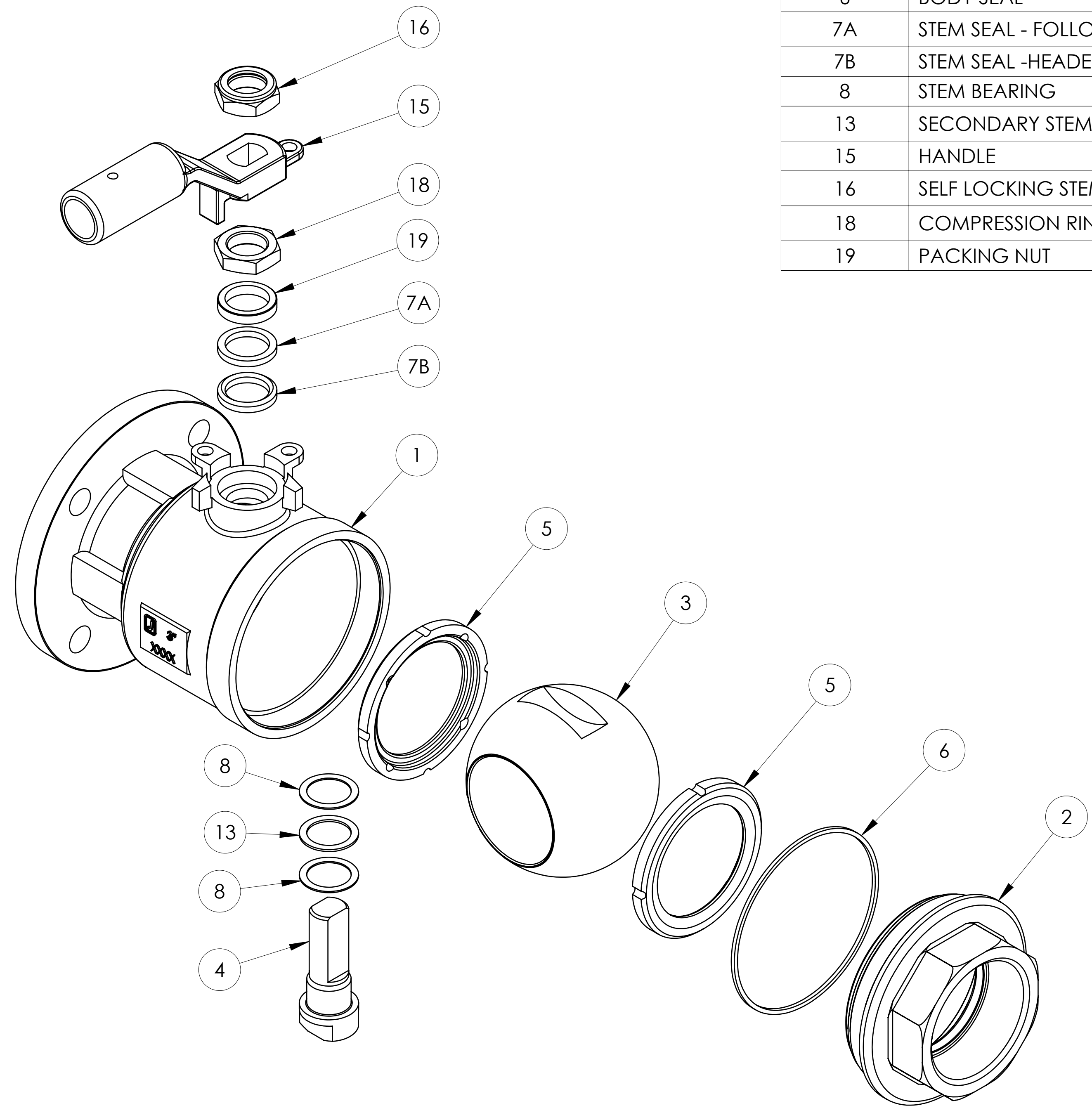
SPECIFICATIONS TO BE
USED IN CONJUNCTION
WITH THIS DRAWING:

SIZE	D V16.04	MAKE FROM	WEIGHT	VOLUME cm ³
ASSEMBLY 3" 6FRF RAILROAD VALVE				
SOLIDWORKS	LOCATION	SHREWSBURY - USA		

DRAWN P. DORRIAN	NELES
REVIEWED	
APPROVED K. SUNDBERG	DATE
DRAWING NO. 5543	REV. A
UNRESTRICTED	SHEET 1 OF 2

ECN NO. 46080	REVISION DESCRIPTION SEE ECN FOR CHANGES
DRAWN C. DESROSIERS	REVIEWED
APPROVED M. HOPE-SOWAH	DATE 04 JAN 2021

ITEM NO.	PART NAME	QTY.
1	BODY	1
2	BODY CAP	1
3	BALL	1
4	STEM	1
5	SEAT	2
6	BODY SEAL	1
7A	STEM SEAL - FOLLOWER	1
7B	STEM SEAL - HEADER	1
8	STEM BEARING	2
13	SECONDARY STEM SEAL	1
15	HANDLE	1
16	SELF LOCKING STEM NUT	1
18	COMPRESSION RING	1
19	PACKING NUT	1



SECTION A-A

ECN NO. 46080	REVISION DESCRIPTION SEE ECN FOR CHANGES
------------------	---

UNLESS OTHERWISE NOTED
DIMENSIONS IN INCHES.
DIMENSIONING, TOLERANCING, AND DRAWING
INTERPRETATION IS IN ACCORDANCE WITH
ASME Y14.5M 250

ANGLES = ±5° FINISH = 250
REMOVE SHARP EDGES AND CORNERS TO
0.02-0.03 RADIUS OR CHAMFER

DRAWN C. DESROSIERS	REVIEWED
APPROVED M. HOPE-SOWAH	DATE 04 JAN 2021

SPECIFICATIONS TO BE USED IN CONJUNCTION WITH THIS DRAWING:		SIZE D V16.04	MAKE FROM	WEIGHT	VOLUME cm ³	DRAWN P. DORRIAN	NELES
ASSEMBLY 3" 6FRF RAILROAD VALVE						REVIEWED	
SOLIDWORKS						LOCATION SHREWSBURY - USA	DATE
UNRESTRICTED						DRAWING NO. 5543	REV. A
						SHEET	2 OF 2