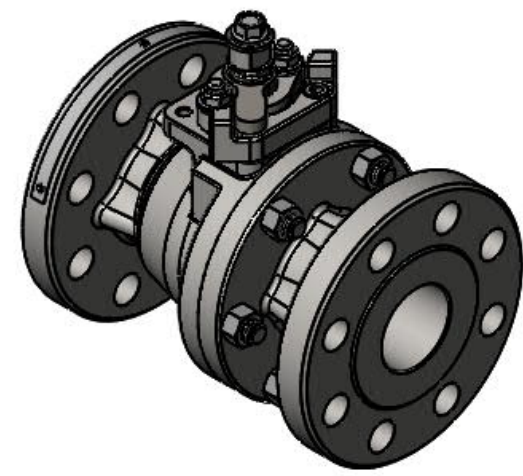
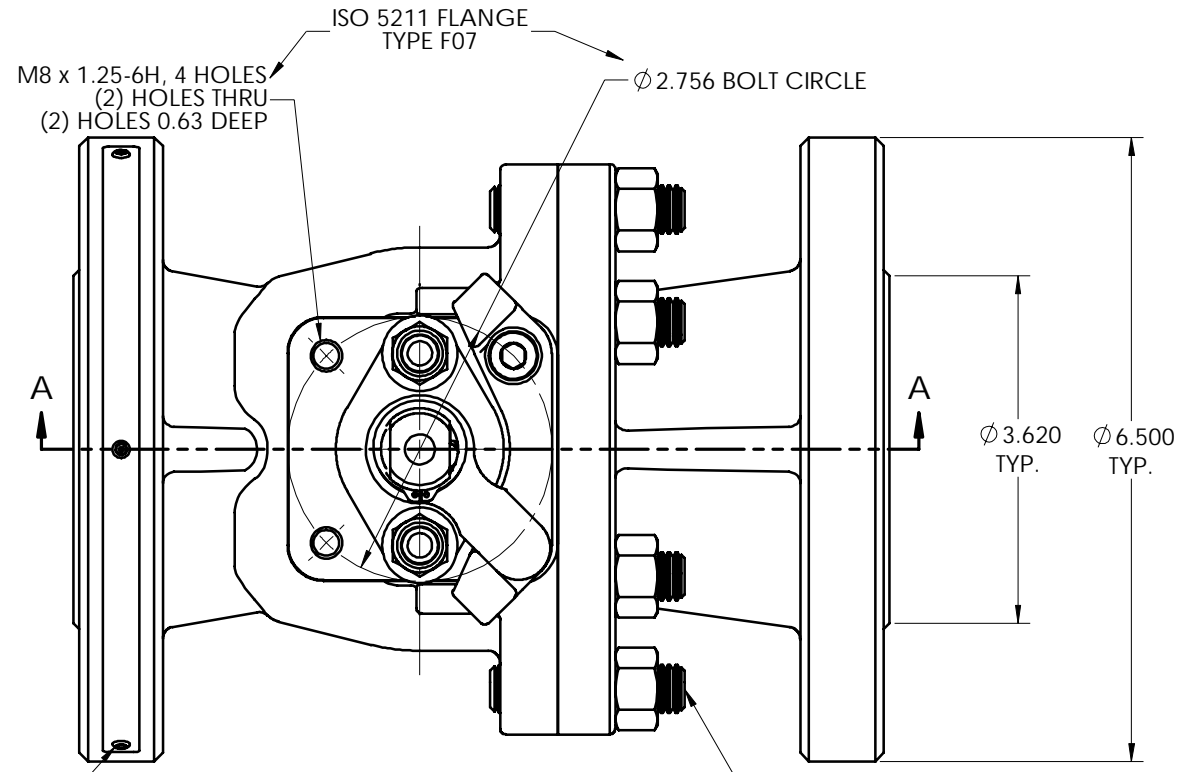


LET	ECN	REVISION	DRAWN	APPROVED	DATE
A	44414	SEE ECN FOR CHANGES	KML	PJD	8-23-18

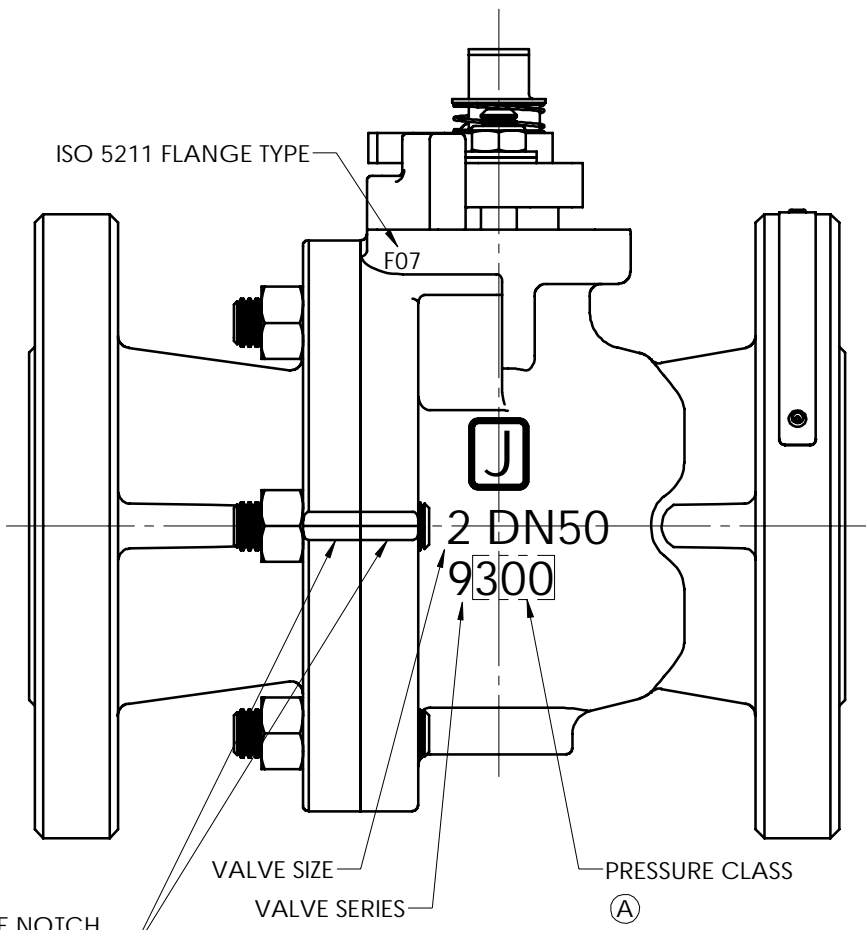
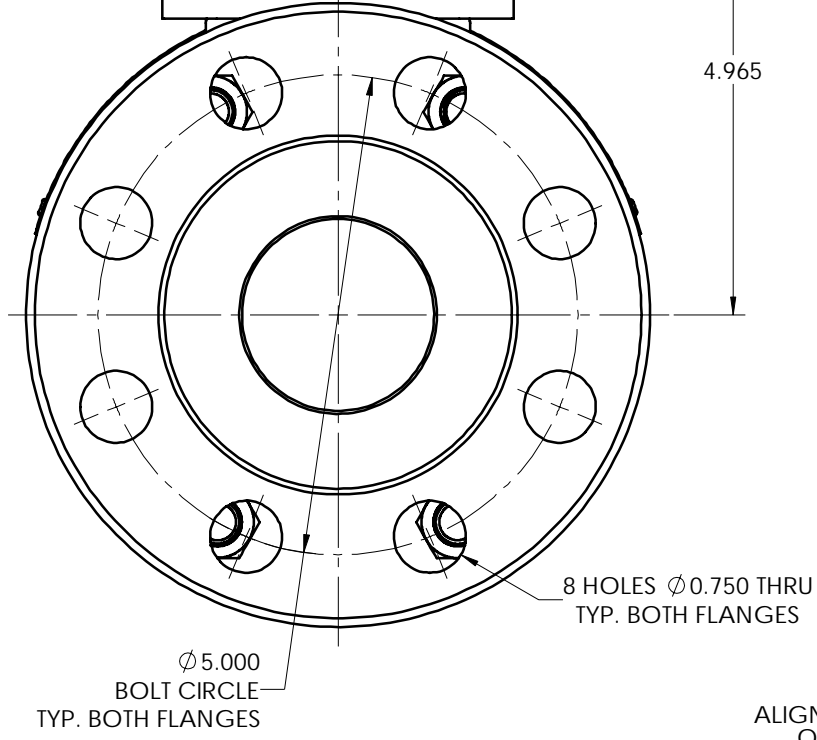
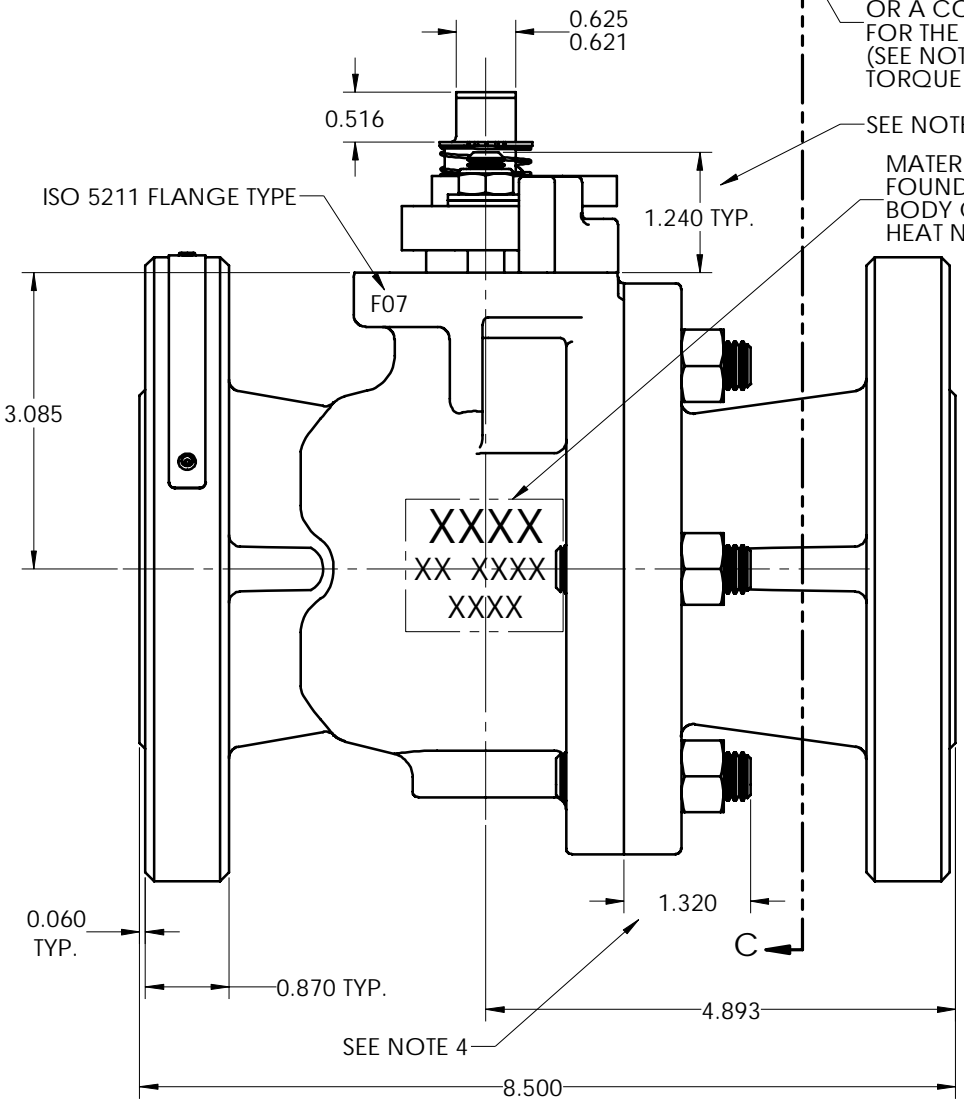
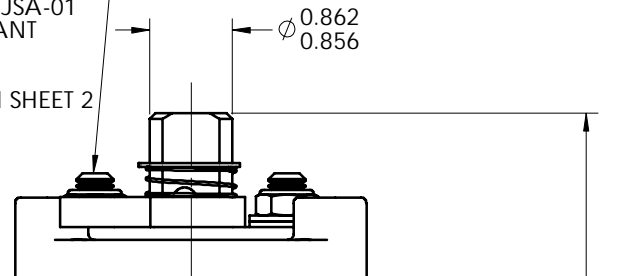


- NOTES:
- ATTACH IDENTIFICATION TAG PER JS-115.
  - FOR INSTALLATION, MAINTENANCE & OPERATING INSTRUCTIONS SEE IMO-226.
  - WHERE IDENTIFICATION APPEARS ON NUT OR STUD FACE, ASSEMBLE WITH IDENTIFICATION ALWAYS VISIBLE.
  - STUD HEIGHT IS ONLY APPLICABLE WHEN USING CONTINUOUS THREADED STUDS. WHEN USING CONTINUOUS THREADED STUDS, USE LOCTITE #271 ON STUD THREADS INTO BODY PER JSA-34. DOUBLE ENDED STUDS DO NOT REQUIRE LOCTITE.
- (A) 5. DIMENSIONS ARE IN INCHES.
6. SEE INSTRUCTIONAL DRAWING I-1774 FOR HANDLE OPTIONS AND DIMENSIONS.
- (A) 7. DOUBLE ENDED STUDS MAY BE SUBSTITUTED WITH CONTINUOUS THREADED STUDS IN THE SAME MATERIAL. APPROVED CONTINUOUS THREADED STUD SUBSTITUTIONS ARE SHOWN ON INSTRUCTIONAL DRAWING, I-1783.

LUBRICATE STUD THREADS AND BOTTOM FACE OF NUT PER JSA-01 OR A COMPATIBLE LUBRICANT FOR THE GIVEN VALVE (SEE NOTE 3) TORQUE NUT TO 4 FT.-LBS.

LUBRICATE STUD THREADS AND BOTTOM FACE OF NUT PER JSA-01 OR A COMPATIBLE LUBRICANT FOR THE GIVEN VALVE (SEE NOTE 3) TORQUE NUT PER TABLE ON SHEET 2

SEE NOTE 4  
MATERIAL IDENT  
FOUNDRY IDENT  
BODY CASTING NO.  
HEAT NUMBER



ALIGN VEE NOTCH ON BODY CAP WITH VEE NOTCH ON BODY

© 2019 Metso

THIS DRAWING AND ALL INFORMATION CONTAINED HEREIN ARE THE PROPERTY OF METSO AND ARE NOT TO BE USED EXCEPT AS AUTHORIZED IN WRITING BY METSO

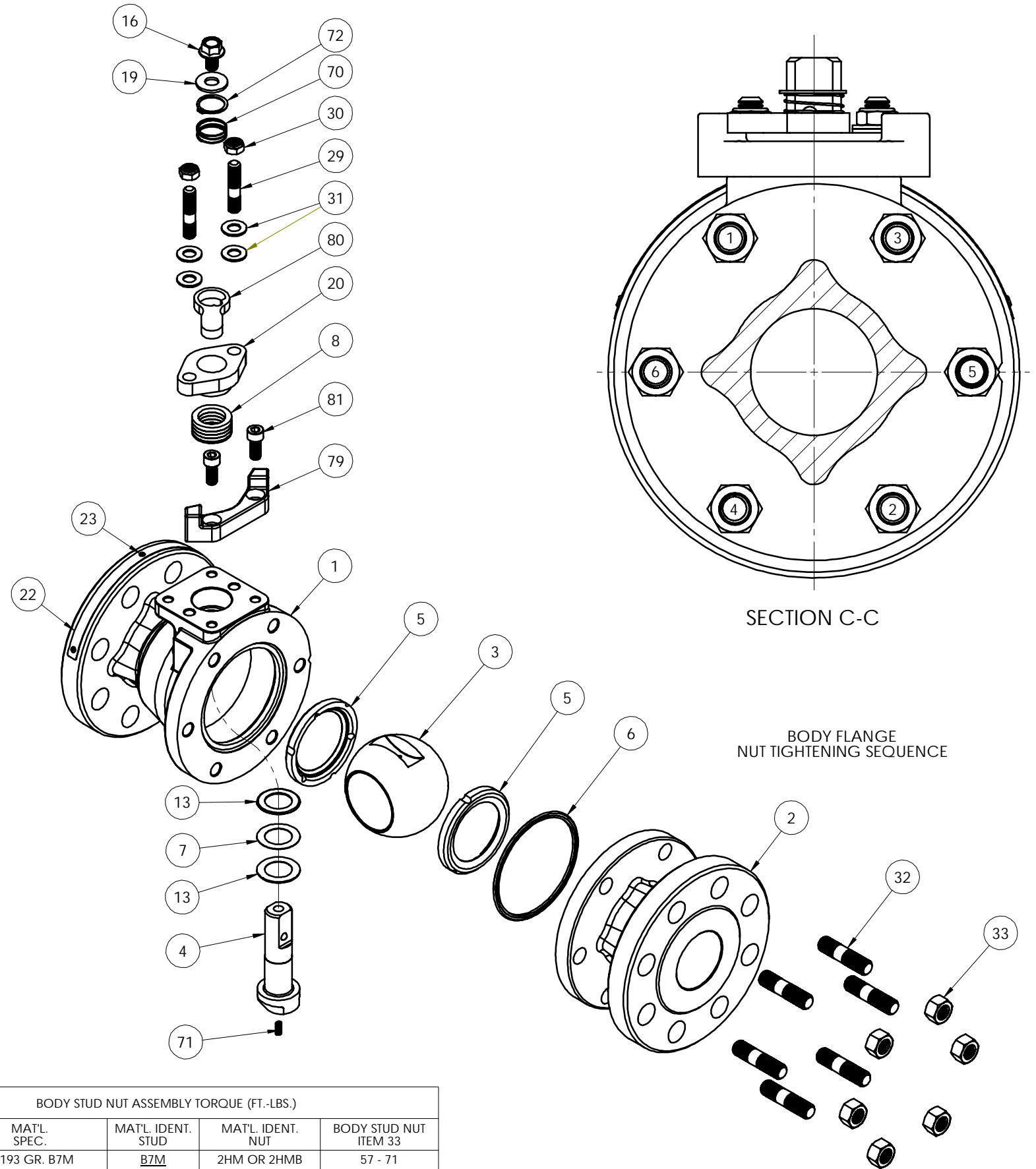
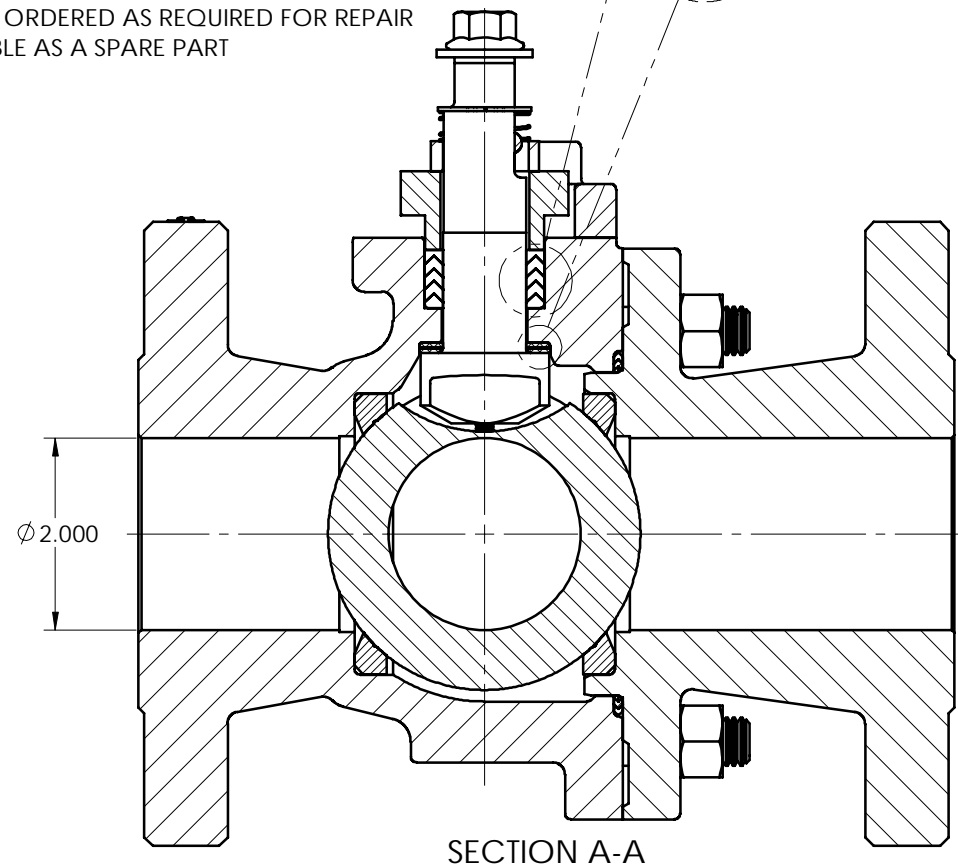
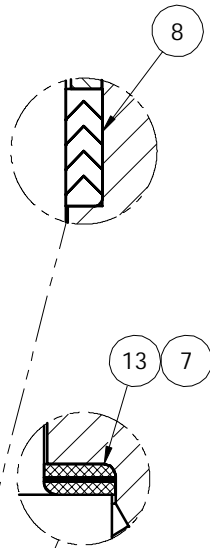
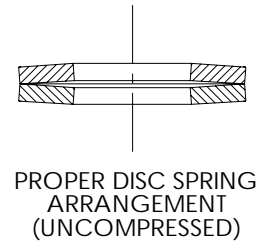
SPECIFICATIONS TO BE USED IN CONJUNCTION WITH THIS DRAWING		MAKE FROM PART NO.		RESTRICTED	
JSA-01, JST-02	JSA-10, JSA-17	JSA-34, JSA-85	JS-115	IMO-226	TITLE: VALVE ASSEMBLY 2" SERIES 9300RR MODEL C FULL BORE ASME CLASS 300 FLANGED BALL VALVE
PJD	6/22/15	KAS	7/1/15		DATE



SIZE	DWG NO	REV
D	5572	A

ITEM NO.	DESCRIPTION	QTY.	SPARE PART
1	BODY	1	N/A
2	BODY CAP	1	N/A
3	BALL	1	B
4	STEM	1	B
5	SEAT	2	A
6	BODY SEAL	1	A
7	SECONDARY STEM SEAL	1	A
8	STEM SEAL	1	A
13	STEM BEARING	2	A
16	HEX. HEAD CAP SCREW	1	B
17	HANDLE (SEE NOTE 6)	1	B
19	FLAT WASHER	1	B
20	COMPRESSION PLATE	1	B
22	IDENTIFICATION TAG	1	N/A
23	POP RIVET	3	N/A
29	BONNET STUD	2	B
30	BONNET STUD NUT (ESNA)	2	B
31	DISC SPRING	4	B
32	BODY STUD	6	B
33	BODY STUD NUT	6	B
70	TOP GROUNDING SPRING	1	B
71	BOTTOM GROUNDING SPRING	1	B
72	REATAINING RING	1	B
79	TRAVEL STOP	1	B
80	INDICATOR STOP	1	B
81	SOCKET HEAD CAP SCREW	2	B

A= PART SUPPLIED IN SPARE PART SET  
 B= PART MAY BE ORDERED AS REQUIRED FOR REPAIR  
 N/A= NOT AVAILABLE AS A SPARE PART



BODY STUD NUT ASSEMBLY TORQUE (FT.-LBS.)				
MAT'L. CODE	MAT'L. SPEC.	MAT'L. IDENT. STUD	MAT'L. IDENT. NUT	BODY STUD NUT ITEM 33
19	A-193 GR. B7M	B7M	2HM OR 2HMB	57 - 71
20	A-193 GR. B7	B7	2H OR 2HB	75 - 93
31	A-193 GR. B8	B8, B8C OR B8T	B8, B8C OR B8T	81 - 99
35	B-473 CARPENTER 20Cb-3	A20	A20	43 - 53
71	QQ-N-286	K	K	58 - 71

(A)

THIS DRAWING AND ALL INFORMATION CONTAINED HEREIN ARE THE PROPERTY OF METSO AND ARE NOT TO BE USED EXCEPT AS AUTHORIZED IN WRITING BY METSO

RESTRICTED

TITLE: VALVE ASSEMBLY 2" SERIES 9300RR MODEL C FULL BORE ASME CLASS 300 FLANGED BALL VALVE

DATE: 6/22/15

DATE: 7/1/15

REV: A

SIZE: D DWG NO: 5572

metso SHREWSBURY, MASSACHUSETTS

© 2019 Metso