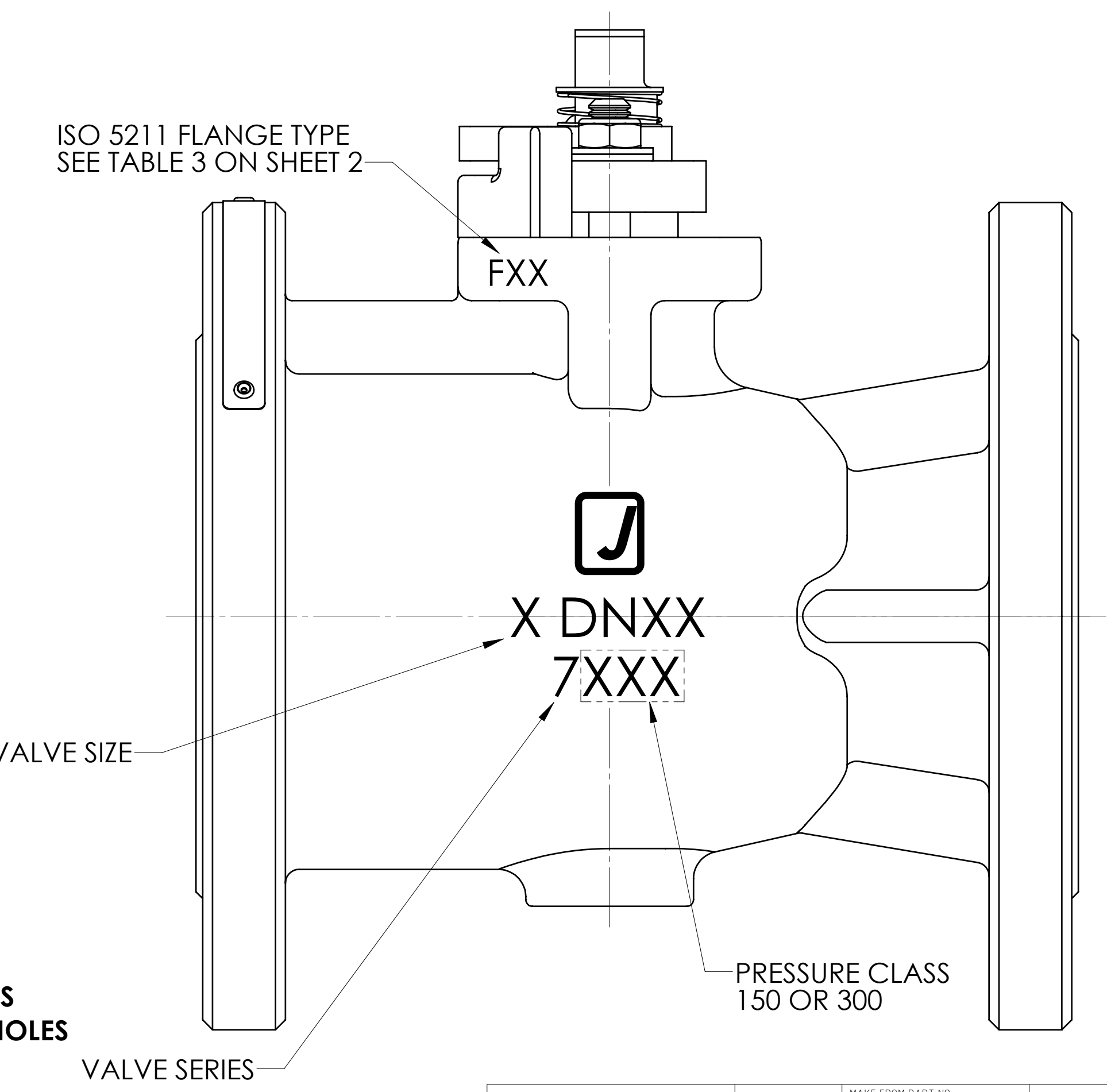
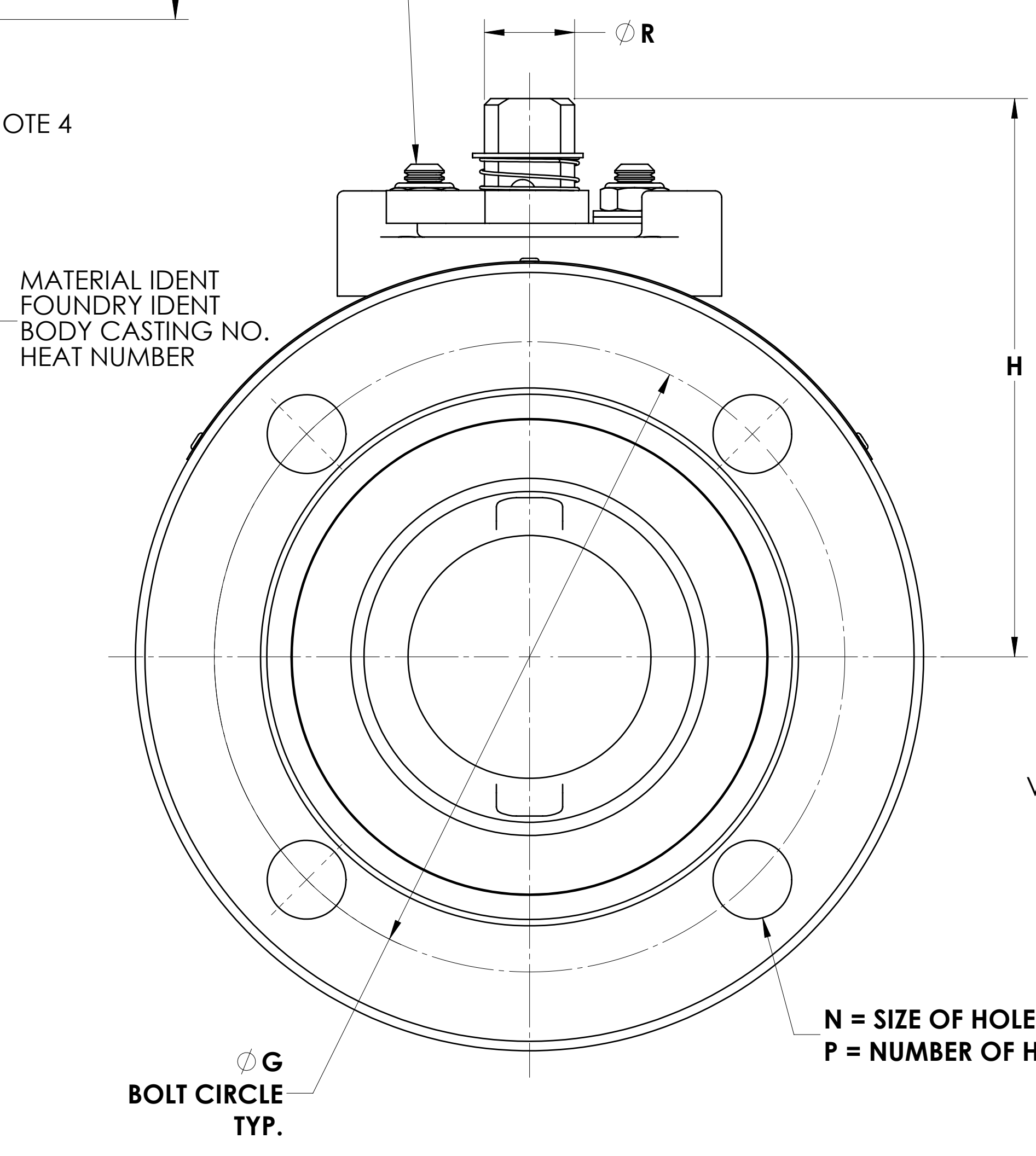
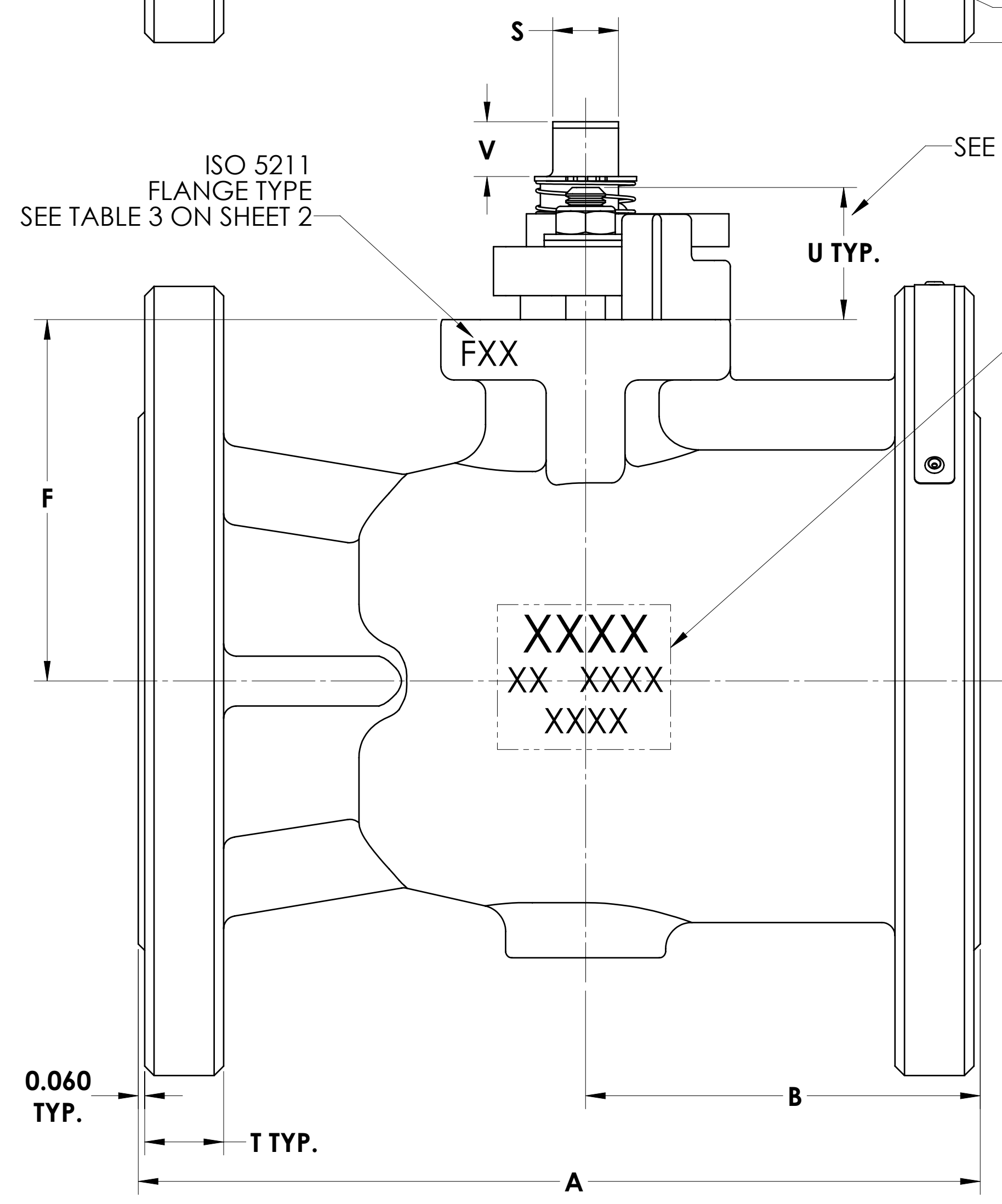


VALVE SIZE & SERIES	DIMENSIONS ARE IN INCHES																	APPROX. WEIGHT LBS.
	A	B	C	D	E	F	G	H	L	M	N	P	R	S	T	U	V	
3" 7150RR	8.000	3.750	7.500	5.000	2.312	3.435	6.000	5.315	M8	2.756	0.750	4	0.859	0.623	0.750	1.240	0.520	39
3" 730SRR	8.000	3.750	8.250	5.000	2.312	3.435	6.620	5.315	M8	2.756	0.880	8	0.859	0.623	1.120	1.240	0.520	52
3" 7300RR	11.120	3.750	8.250	5.000	2.312	3.435	6.620	5.505	M8	2.756	0.880	8	0.859	0.623	1.120	1.240	0.520	59
4" 7150RR	9.000	4.388	9.000	6.190	3.000	3.928	7.500	5.808	M8	2.756	0.750	8	0.859	0.623	0.940	1.240	0.520	63
6" 7150RR	10.500	4.953	11.000	8.500	4.000	5.512	9.500	8.237	M10	4.016	0.880	8	1.108	0.810	1.000	1.660	0.950	124

LUBRICATE STUD THREADS AND BOTTOM FACE OF NUT PER JSA-01 OR A COMPATIBLE LUBRICANT FOR THE GIVEN VALVE (SEE NOTE 3)  
TORQUE NUT PER TABLE 1 ON SHEET 2

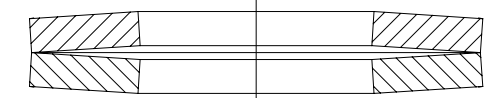
**SEE SHEET 2 FOR NOTES**



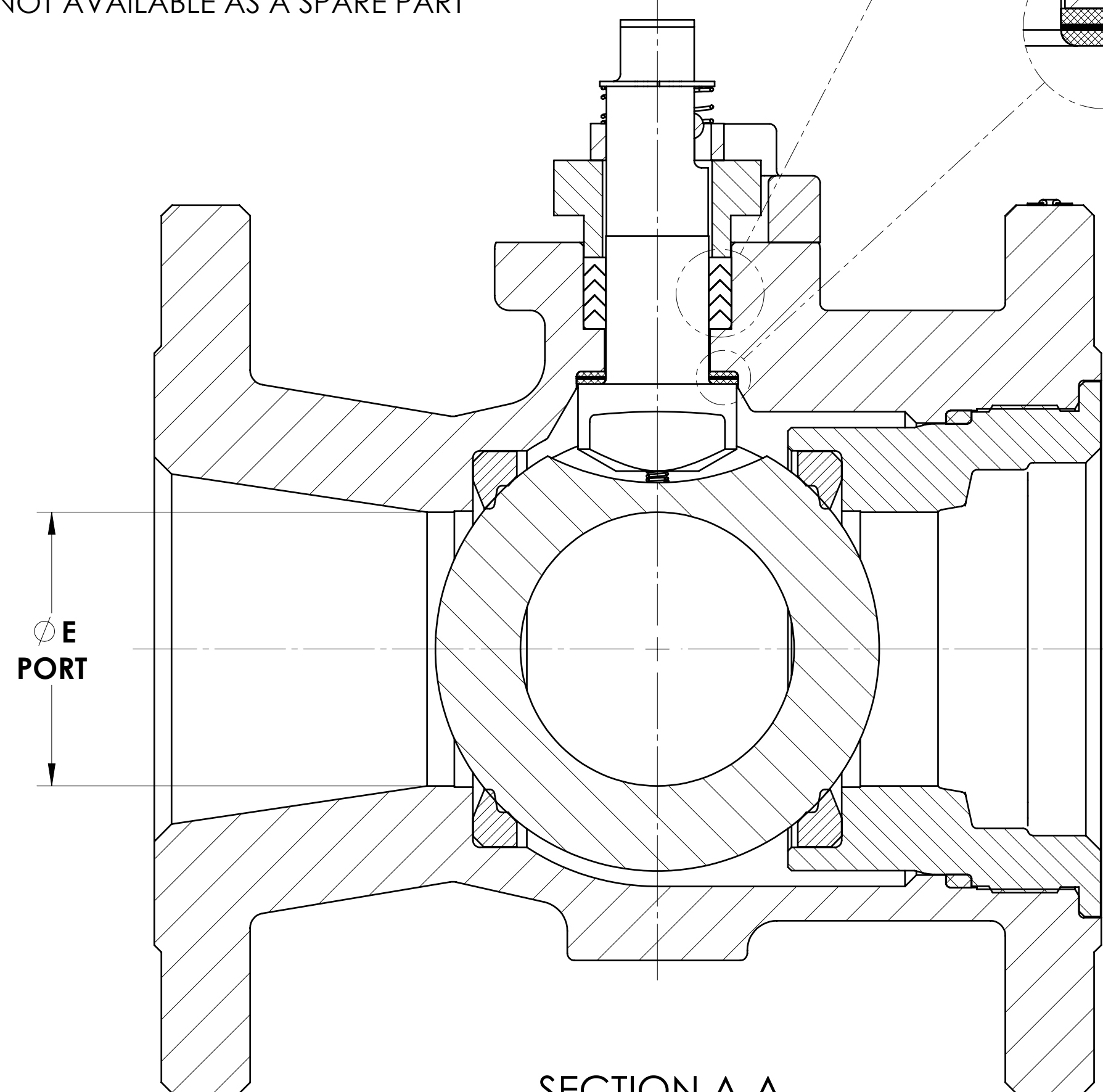
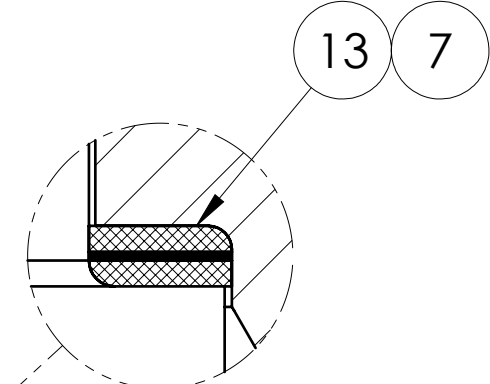
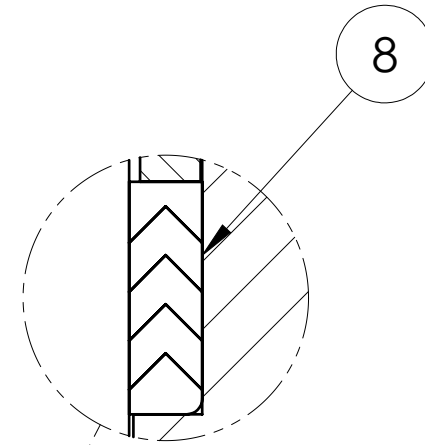
<small>THIS DRAWING AND ALL INFORMATION CONTAINED HEREIN ARE THE PROPERTY OF METSO AND ARE NOT TO BE USED EXCEPT AS AUTHORIZED IN WRITING BY METSO.</small> <small>UNLESS OTHERWISE NOTED DIMENSIONING, TOLERANCING, &amp; DRAWING INTERPRETATION IS IN ACCORDANCE WITH ASME Y14.5M</small> <small>ANGLES = ±5° FINISH = 250 REMOVE SHARP EDGES AND CORNERS TO .02 - .03 RADIUS OR CHAMFER, DIMENSIONS IN INCHES.</small>	<small>SPECIFICATIONS TO BE USED IN CONJUNCTION WITH THIS DRAWING</small> JSA-01, JST-02 JSA-10, JSA-17 JSA-34 JS-115 IMO-R30	<small>MAKE FROM PART NO.</small> TITLE: <b>VALVE ASSEMBLY</b> <b>3" - 6" SERIES 7150RR &amp; 7300RR</b> <b>MODEL C FLANGED BALL VALVE</b>	<b>RESTRICTED</b> <small>DRAWN</small> MLL <small>DATE</small> 7/5/17 <small>APPVD.</small> KAS <small>DATE</small> 7/5/17 <small>REV</small> 0
	<small>SHREWSBURY, MASSACHUSETTS</small> 	<small>SIZE</small> D <small>DWG NO.</small> 5644 <small>REV</small> 0	<small>© 2017 Metso</small>

ITEM NO.	DESCRIPTION	QTY.	SPARE PART
1	BODY	1	N/A
2	INSERT	1	N/A
3	BALL	1	B
4	STEM	1	B
5	SEAT	2	A
6	BODY SEAL	1	A
7	SECONDARY STEM SEAL	1	A
8	STEM SEAL	1	A
13	STEM BEARING	2	A
16	HEX. HD. CAP SCREW	1	B
17	HANDLE (SEE NOTE 6)	1	B
19	HANDLE WASHER	1	B
20	COMPRESSION PLATE	1	B
22	IDENTIFICATION TAG	1	N/A
23	POP RIVET	3	N/A
29	BONNET STUD	2	B
30	BONNET STUD NUT (ESNA)	2	B
31	DISC SPRING	4	B
70	TOP GROUNDING SPRING	1	B
71	BOTTOM GROUNDING SPRING	1	B
72	RETAINING RING	1	B
79	TRAVEL STOP	1	B
80	INDICATOR STOP	1	B
81	SOCKET HEAD CAP SCREW	2	B

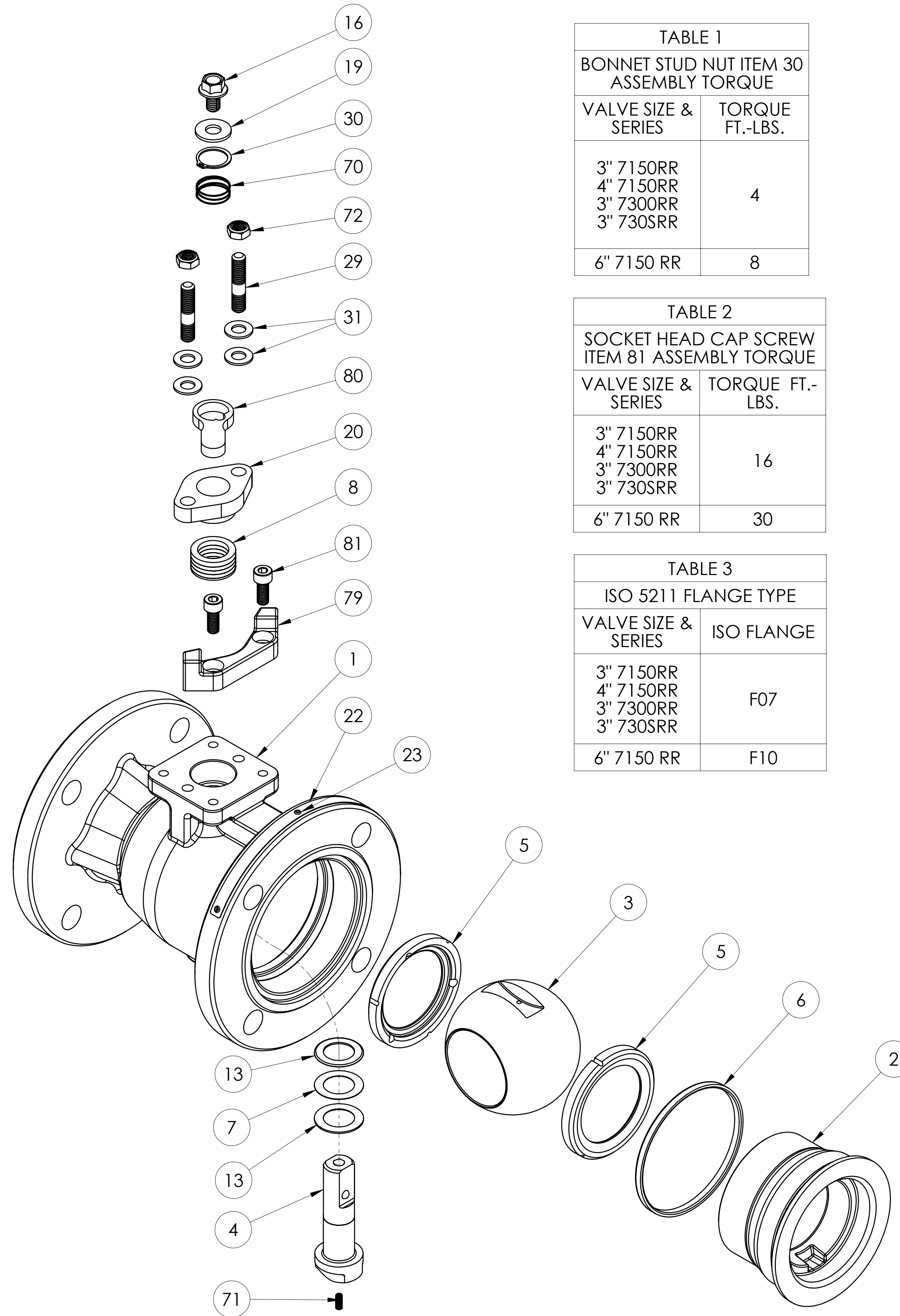
A= PART SUPPLIED IN SPARE PART SET  
 B= PART MAY BE ORDERED AS REQUIRED FOR REPAIR  
 N/A= NOT AVAILABLE AS A SPARE PART



PROPER DISC SPRING ARRANGEMENT (UNCOMPRESSED)



SECTION A-A



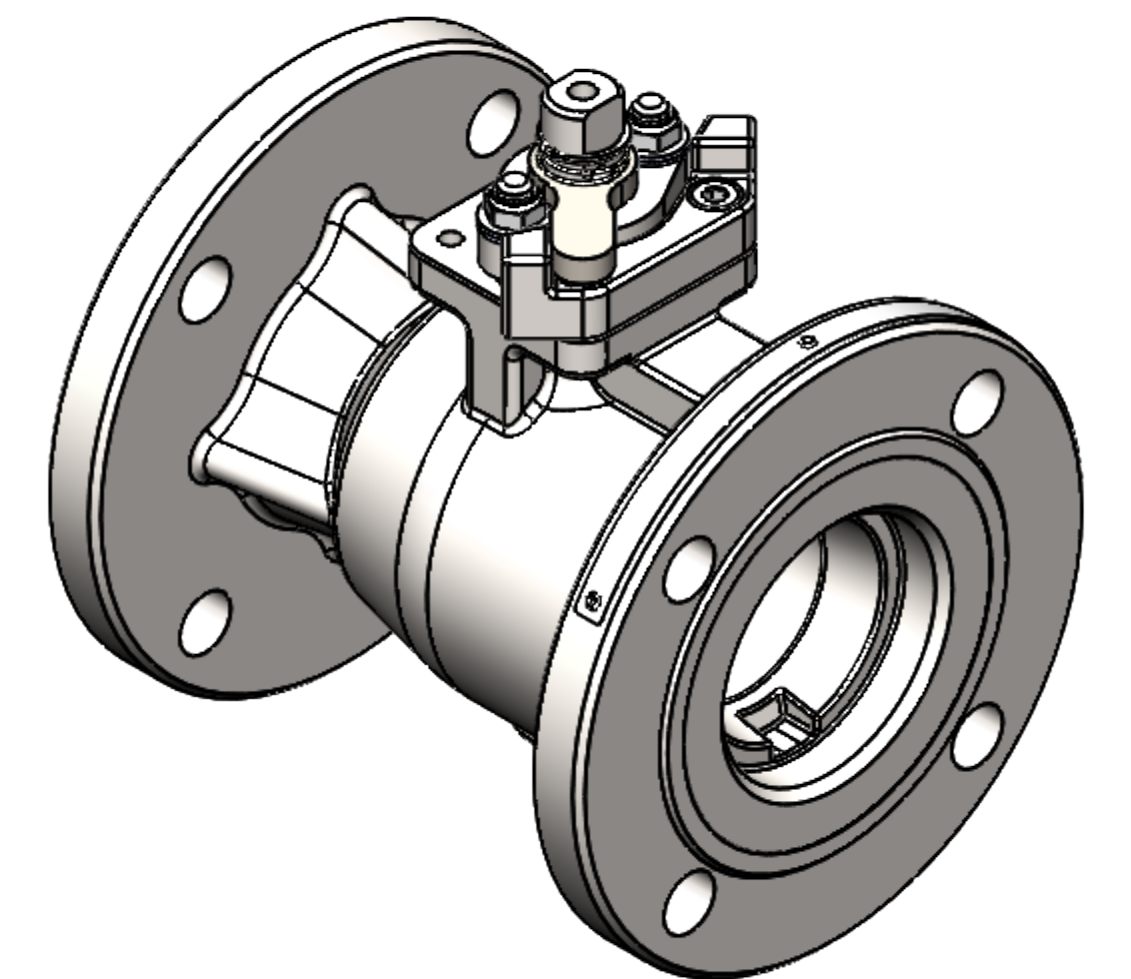
VALVE SIZE & SERIES	TORQUE FT.-LBS.
3" 7150RR 4" 7150RR 3" 7300RR 3" 730SRR	4
6" 7150 RR	8

VALVE SIZE & SERIES	TORQUE FT.-LBS.
3" 7150RR 4" 7150RR 3" 7300RR 3" 730SRR	16
6" 7150 RR	30

VALVE SIZE & SERIES	ISO FLANGE
3" 7150RR 4" 7150RR 3" 7300RR 3" 730SRR	F07
6" 7150 RR	F10

NOTES:

1. ATTACH IDENTIFICATION TAG PER JS-115.
2. FOR INSTALLATION, MAINTENANCE & OPERATING INSTRUCTIONS SEE IMO-R30.
3. WHERE IDENTIFICATION APPEARS ON NUT OR STUD FACE, ASSEMBLE WITH IDENTIFICATION ALWAYS VISIBLE.
4. STUD HEIGHT IS ONLY APPLICABLE WHEN USING CONTINUOUS THREADED STUDS. WHEN USING CONTINUOUS THREADED STUDS, USE LOCTITE #271 ON STUD THREADS INTO BODY PER JSA-34. DOUBLE ENDED STUDS **DO NOT** REQUIRE LOCTITE.
5. DIMENSIONS ARE IN INCHES.
6. SEE INSTRUCTIONAL DRAWING I-1774 FOR HANDLE OPTIONS AND DIMENSIONS.



THIS DRAWING AND ALL INFORMATION CONTAINED HEREIN ARE THE PROPERTY OF METSO AND ARE NOT TO BE USED EXCEPT AS AUTHORIZED IN WRITING BY METSO.

UNLESS OTHERWISE NOTED DIMENSIONING, TOLERANCING, & DRAWING INTERPRETATION IS IN ACCORDANCE WITH ASME Y14.5M

ANGLES = ±5° FINISH REMOVE SHARP EDGES AND CORNERS TO .02 - .03 RADIUS OR CHAMFER, DIMENSIONS IN INCHES.

250

© 2017 Metso

SHREWSBURY, MASSACHUSETTS

RESTRICTED

TITLE: VALVE ASSEMBLY  
3" - 6" SERIES 7150RR & 7300RR  
MODEL C FLANGED BALL VALVE

DATE: 7/5/17

APPVD: KAS

REV: 0

SIZE: D DWG NO: 5644

SHEET 2 OF 2